

Anti-GSDMD antibody (276-484) [S5210RM] (STJ11105210)

GENERAL INFORMATION

Product Type	Primary antibodies
Applications	WB/ELISA
Host / Source	Rabbit
Reactivity	Human

PRODUCT PROPERTIES

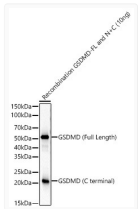
Clonality	Monoclonal
Concentration	Lot specific
Conjugation	Unconjugated
Purification	Affinity purification
Dilution Range	WB:1:2000-1:12000 ELISA:Recommended starting concentration is 1 Mu g/mL. Please optimize the concentration based on your specific assay requirements.
Formulation	PBS with 0.09% Sodium Azide, 0.05% BSA, 50% Glycerol, pH 7.3.
Isotype	IgG
Molecular Weight	Protein Mw: 53KDa Observed Mw: 23kDa/53kDa
Storage Instruction	Store at-20°C for up to 1 year from the date of receipt, and avoid repeat freeze-thaw cycles.

TARGET INFORMATION

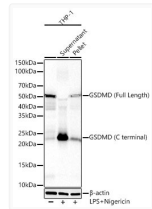
Gene ID	79792
Gene Symbol	GSDMD
UniProt ID	GSDMD_HUMAN
Immunogen Region	276-484
Immunogen Sequence	GVPAEGAFTEDFQGLRAEVE TISKELELLDRELCQLLEG LEGVLRDQLALRALEEALAQ GQSLGPEPLDGPAGAVLEC LVLSSGMLVPELAIPVVYLL GALTMLSETQHKLLAEALAS QTLGLPLELVGSLLEQSAPW QERSTMSLPPGLLGNSWGEQ APAWVLLDECGLELGEDTPH VCWEPQAQGRMCALYASLAL LSGLSQEPH
Specificity	Recombinant fusion protein containing a sequence corresponding to amino acids 276-484 of human Gasdermin D (NP_079012.3)

ADDITIONAL INFORMATION

Note **STRICTLY FOR FURTHER SCIENTIFIC RESEARCH USE ONLY (RUO). MUST NOT TO BE USED IN DIAGNOSTIC OR THERAPEUTIC APPLICATIONS.**



Western blot analysis of recombinant GSDMD Protein using GSDMD (Full Length+C terminal) Rabbit monoclonal antibody (STJ11105210) at 1:2000 dilution. Secondary antibody: HRP Goat Anti-Rabbit IgG (H+L) (STJS000856) at 1:10000 dilution. Lysates/proteins: 10 ng per lane. Blocking buffer: 3% nonfat dry milk in TBST. Detection: ECL Basic Kit. Exposure time: 10s. western blot samples for antibody validation are kindly provided by Dr. Feng Shao, NIBS



Western blot analysis of lysates from THP-1 cells using GSDMD (Full Length+C terminal) Rabbit monoclonal antibody (STJ11105210) at 1:2000 dilution. THP-1 cells were treated by LPS+Nigericin. Secondary antibody:HRP Goat Anti-Rabbit IgG (H+L) (STJS000856) at 1:10000 dilution. Lysates/proteins: 25 Mu g per lane. Blocking buffer: 3% nonfat dry milk in TBST. Detection:ECL Basic Kit. Exposuretime: 30s. western blot samples for antibody validation are kindly provided by Dr. Feng Shao, NIBS