

Anti-COX7A2L antibody (1-114 aa) (STJ11105204)

GENERAL INFORMATION

Product Type	Primary antibodies
Applications	WB/ELISA
Host / Source	Rabbit
Reactivity	Human

PRODUCT PROPERTIES

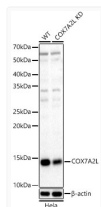
Clonality	Polyclonal
Concentration	Lot specific
Conjugation	Unconjugated
Purification	Affinity purification
Dilution Range	WB:1:1000-1:5000 ELISA:Recommended starting concentration is 1 µg/mL. Please optimize the concentration based on your specific assay requirements.
Formulation	PBS with 0.02% Sodium Azide, 50% Glycerol, pH 7.3.
Isotype	IgG
Molecular Weight	Protein Mw: 13kDa Observed Mw: 14kDa
Storage Instruction	Store at -20°C for up to 1 year from the date of receipt, and avoid repeat freeze-thaw cycles.

TARGET INFORMATION

Gene ID	9167
Gene Symbol	COX7A2L
UniProt ID	CO72L_HUMAN
Immunogen Region	1-114 aa
Immunogen Sequence	MYKFGSGFTQKLAGAWASEA YSPQGLKPVVSTEAPPIIFA TPTKLTSDSTVYDYGKKNKV PELQKFFQKADGVPVYLKRG LPDQMLYRRTTMAITVGGTIY CLIALYMASQPKNK
Specificity	Recombinant fusion protein containing a sequence corresponding to amino acids 1-114 of human COX7A2L. (NP_004709.2).

ADDITIONAL INFORMATION

Note STRICTLY FOR FURTHER SCIENTIFIC RESEARCH USE ONLY (RUO). MUST NOT TO BE USED IN DIAGNOSTIC OR THERAPEUTIC APPLICATIONS.



Western blot analysis of extracts from wild type (WT) and COX7A2L knockdown (KD) HeLa cells, using COX7A2L Rabbit polyclonal antibody (STJ11105204) at 1:2000 dilution. Secondary antibody: HRP Goat Anti-Rabbit IgG (H+L) (STJS000856) at 1:10000 dilution. Lysates/proteins: 25 µg per lane. Blocking buffer: 3% nonfat dry milk in TBST. Detection: ECL Basic Kit. Exposure time: 60s.