

Anti-CCT6A antibody (80-250) (STJ11105199)

GENERAL INFORMATION

Product Type	Primary antibodies
Applications	WB/ELISA
Host / Source	Rabbit
Reactivity	Human/Rat

PRODUCT PROPERTIES

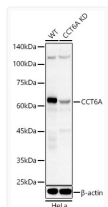
Clonality	Polyclonal
Concentration	Lot specific
Conjugation	Unconjugated
Purification	Affinity purification
Dilution Range	WB:1:1000-1:5000 ELISA:Recommended starting concentration is 1 Mu g/mL. Please optimize the concentration based on your specific assay requirements.
Formulation	PBS with 0.02% Sodium Azide, 50% Glycerol, pH 7.3.
Isotype	IgG
Molecular Weight	Protein Mw: 58kDa Observed Mw: 62kDa/58kDa
Storage Instruction	Store at -20°C for up to 1 year from the date of receipt, and avoid repeat freeze-thaw cycles.

TARGET INFORMATION

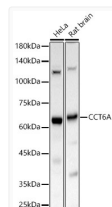
Gene ID	908
Gene Symbol	CCT6A
UniProt ID	TCPZ_HUMAN
Immunogen Region	80-250
Immunogen Sequence	VATAQDDITGDGTTSNVLIIGELLKQADLYISEGLHPRIITEGFEAAKEKALQFLEEYKV SREMDRETLDVARTSLRTRK VHAELADVLTEAVVDSILAIKKQDEPIDLFMIEIMEMKHK SETDTSLRIGRLVDHGARHP DMKKRVEDAYILTCNVSLLEY EKTEVNSGGFFY
Specificity	Recombinant Protein corresponding to a sequence within amino acids 80-250 of human CCT6A (NP_001753.1).

ADDITIONAL INFORMATION

Note **STRICTLY FOR FURTHER SCIENTIFIC RESEARCH USE ONLY (RUO). MUST NOT TO BE USED IN DIAGNOSTIC OR THERAPEUTIC APPLICATIONS.**



Western blot analysis of lysates from wild type (WT) and CCT6A knockdown (KD) HeLa cells using CCT6A Rabbit polyclonal antibody (STJ11105199) at 1:2000 dilution. Secondary antibody: HRP Goat Anti-Rabbit IgG (H+L) (STJS000856) at 1:10000 dilution. Lysates/proteins: 25 Mu g per lane. Blocking buffer: 3% nonfat dry milk in TBST. Detection: ECL Basic Kit. Exposure time: 90s.



Western blot analysis of various lysates, using [KO Validated] CCT6A Rabbit polyclonal antibody (STJ11105199) at 1:1000 dilution. Secondary antibody: HRP Goat Anti-Rabbit IgG (H+L) (STJS000856) at 1:10000 dilution. Lysates/proteins: 25 Mu g per lane. Blocking buffer: 3% nonfat dry milk in TBST. Detection: ECL Basic Kit. Exposure time: 30s.