

Anti-CD146 antibody (24-563 aa) (STJ11105192)

GENERAL INFORMATION

Product Type	Primary antibodies
Applications	WB/ELISA
Host / Source	Rabbit
Reactivity	Human/Mouse

PRODUCT PROPERTIES

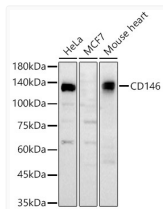
Clonality	Polyclonal
Concentration	Lot specific
Conjugation	Unconjugated
Purification	Affinity purification
Dilution Range	WB:1:500-1:1000 ELISA:Recommended starting concentration is 1 Mu g/mL. Please optimize the concentration based on your specific assay requirements.
Formulation	PBS with 0.05% Proclin300, 50% Glycerol, pH 7.3.
Isotype	IgG
Molecular Weight	Protein Mw: 71kDa Observed Mw: 120kDa
Storage Instruction	Store at -20°C for up to 1 year from the date of receipt, and avoid repeat freeze-thaw cycles.

TARGET INFORMATION

Gene ID	84004
Gene Symbol	Mcam
UniProt ID	MUC18_MOUSE
Immunogen Region	24-563 aa
Immunogen Sequence	VPGE EKQPVPTPDLVEAEV G STALLKCGPSRASGNFSQVD WFLIHKERQILIFRVHQGKG QREPG EYEHRLSLQDSVATL ALSHVTPHDERMFLCKSKRP RLQDHYVELQVFKAPEEPTI QANVVG IHVDRQELREVATC VGRNGYPIPVQLWYKNSLPL QEEENRVHIQSSQIVESSGL YTLKSVLSARLVKEDKDAQF YCELSYRLPSGNHMKESKEV TVPVFYPAEKVWVEVEPVG
Specificity	Recombinant fusion protein containing a sequence corresponding to amino acids 24-563 of mouse CD146. (NP_075548.2).

ADDITIONAL INFORMATION

Note STRICTLY FOR FURTHER SCIENTIFIC RESEARCH USE ONLY (RUO). MUST NOT TO BE USED IN DIAGNOSTIC OR THERAPEUTIC APPLICATIONS.



Western blot analysis of various lysates, using CD146 Rabbit polyclonal antibody (STJ11105192) at 1:800 dilution. Secondary antibody: HRP Goat Anti-Rabbit IgG (H+L) (STJS000856) at 1:10000 dilution. Lysates/proteins: 25 Mu g per lane. Blocking buffer: 3% nonfat dry milk in TBST. Detection: ECL Basic Kit. Exposure time: 45s.