

Anti-Chek2 antibody (1-215 aa) (STJ11105188)

GENERAL INFORMATION

Product Type	Primary antibodies
Applications	WB/ELISA
Host / Source	Rabbit
Reactivity	Human/Mouse

PRODUCT PROPERTIES

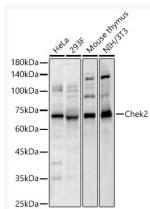
Clonality	Polyclonal
Concentration	Lot specific
Conjugation	Unconjugated
Purification	Affinity purification
Dilution Range	WB:1:1000-1:5000 ELISA:Recommended starting concentration is 1 Mu g/mL. Please optimize the concentration based on your specific assay requirements.
Formulation	PBS with 0.05% Proclin300, 50% Glycerol, pH 7.3.
Isotype	IgG
Molecular Weight	Protein Mw: 61kDa Observed Mw: 62-68kDa
Storage Instruction	Store at -20°C for up to 1 year from the date of receipt, and avoid repeat freeze-thaw cycles.

TARGET INFORMATION

Gene ID	50883
Gene Symbol	Chek2
UniProt ID	CHK2_MOUSE
Immunogen Region	1-215 aa
Immunogen Sequence	MKSHHQSHSSTSSKAHDSAS CSQSQGGFSQPQGTSQLHE LSQYQGSSSSSTGTVPSSSQ SSHSSSGLSSLETVSTQEL CSIPEDQEPEEPGPAPWARL WALQDGFNSLDCVNDNYWFG RDKSCEYCFDGPLLRRTDKY RTYSKKHFRIFREMGPKNCY IVYIEDHSGNGTFVNTLIG KGKRCPLSNNSEIALSLCRN KVFVFFDLTVDDQSV
Specificity	Recombinant fusion protein containing a sequence corresponding to amino acids 1-215 of human Chek2. (NP_057890.1).

ADDITIONAL INFORMATION

Note **STRICTLY FOR FURTHER SCIENTIFIC RESEARCH USE ONLY (RUO). MUST NOT TO BE USED IN DIAGNOSTIC OR THERAPEUTIC APPLICATIONS.**



Western blot analysis of various lysates, using Chek2 Rabbit polyclonal antibody (STJ11105188) at 1:3000 dilution. Secondary antibody: HRP Goat Anti-Rabbit IgG (H+L) (STJS000856) at 1:10000 dilution. Lysates/proteins: 25 Mu g per lane. Blocking buffer: 3% nonfat dry milk in TBST. Detection: ECL Basic Kit. Exposure time: 30s.