

## Anti-Icam1 antibody (28-493 aa) (STJ11105185)

### GENERAL INFORMATION

Product Type	Primary antibodies
Applications	WB/IF/ICC/ELISA
Host / Source	Rabbit
Reactivity	Human/Mouse/Rat

### PRODUCT PROPERTIES

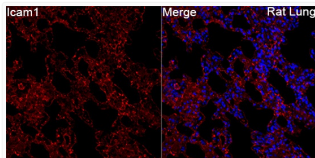
Clonality	Polyclonal
Concentration	Lot specific
Conjugation	Unconjugated
Purification	Affinity purification
Dilution Range	WB:1:500-1:1000 IF/CC:1:50-1:200 ELISA:Recommended starting concentration is 1 µg/mL. Please optimize the concentration based on your specific assay requirements.
Formulation	PBS with 0.05% Proclin300, 50% Glycerol, pH 7.3.
Isotype	IgG
Molecular Weight	Protein Mw: 60kDa Observed Mw: 102kDa
Storage Instruction	Store at -20°C for up to 1 year from the date of receipt, and avoid repeat freeze-thaw cycles.

### TARGET INFORMATION

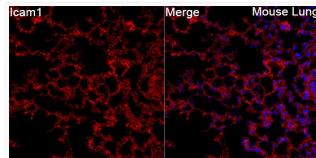
Gene ID	<a href="#">25464</a>
Gene Symbol	<a href="#">Icam1</a>
UniProt ID	<a href="#">ICAM1_RAT</a>
Immunogen Region	28-493 aa
Immunogen Sequence	QVSIHPTEAFLPRGGSVQVN CSSSCEDENLGLGLETNWMK DELSSGHNWKLFKLSDIGED SRPLCFENCGTTQSSASATI TVYSFPERVELDPLPAWQQV GKNLILRCLVEGGAPRTQLS VLLRGNETLSRQAVDGDPK EITFTVLASRGDHGANFSCF TELDLRPPQGLSLFKNVSEVR QLRTFDLPTRVLKLDTPDLL EVGTQKFLCSLEGLFPASE AQIYLEMGGQMLTLESTNS
Specificity	Recombinant fusion protein containing a sequence corresponding to amino acids 28-493 of rat Icam1. (NP_037099.1).

### ADDITIONAL INFORMATION

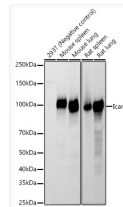
Note STRICTLY FOR FURTHER SCIENTIFIC RESEARCH USE ONLY (RUO). MUST NOT TO BE USED IN DIAGNOSTIC OR THERAPEUTIC APPLICATIONS.



Immunofluorescence analysis of paraffin-embedded Rat lung tissue using Icam1 Rabbit polyclonal antibody (STJ11105185) at a dilution of 1:100 (40x lens). Secondary antibody: Cy3 Goat Anti-Rabbit IgG (H+L) at 1:500 dilution. Blue: DAPI for nuclear staining. Perform high pressure antigen retrieval with 0.01 M citrate buffer (pH 6.0) prior to IF staining.



Immunofluorescence analysis of paraffin-embedded Mouse lung tissue using Icam1 Rabbit polyclonal antibody (STJ11105185) at a dilution of 1:100 (40x lens). Secondary antibody: Cy3 Goat Anti-Rabbit IgG (H+L) at 1:500 dilution. Blue: DAPI for nuclear staining. Perform high pressure antigen retrieval with 0.01 M citrate buffer (pH 6.0) prior to IF staining.



Western blot analysis of various lysates, using Icam1 Rabbit polyclonal antibody (STJ11105185) at 1:1000 dilution. Secondary antibody: HRP Goat Anti-Rabbit IgG (H+L) (STJS000856) at 1:10000 dilution. Lysates/proteins: 25µg per lane. Blocking buffer: 3% nonfat dry milk in TBST. Detection: ECL Basic Kit. Exposure time: 20s.