

Anti-Epcam antibody (24-266 aa) (STJ11105178)

GENERAL INFORMATION

Product Type	Primary antibodies
Applications	WB/ELISA
Host / Source	Rabbit
Reactivity	Human/Mouse/Rat

PRODUCT PROPERTIES

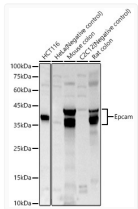
Clonality	Polyclonal
Concentration	Lot specific
Conjugation	Unconjugated
Purification	Affinity purification
Dilution Range	WB:1:500-1:1000 ELISA:Recommended starting concentration is 1 Mu g/mL. Please optimize the concentration based on your specific assay requirements.
Formulation	PBS with 0.05% Proclin300, 50% Glycerol, pH 7.3.
Isotype	IgG
Molecular Weight	Protein Mw: 35kDa Observed Mw: 35-40kDa
Storage Instruction	Store at-20°C for up to 1 year from the date of receipt, and avoid repeat freeze-thaw cycles.

TARGET INFORMATION

Gene ID	17075
Gene Symbol	Epcam
UniProt ID	EPCAM_MOUSE
Immunogen Region	24-266 aa
Immunogen Sequence	QRDCVCDNYKLATSCSLNEY GECQCTS YGTQNTVICSKLA SKCLAMKAEMTHSKSGRRIK PEGAIQNNDGLYDPDCDEQG LFKAKQCNGTATCWCVNTAG VRRTDKDEITCSESRVRYW IIIELKHKERESPYDHQSLQ TALQEAFSTRYKLNQKFIKN IMYENNVTIDLQMNSSQKT QDDVDIADVAYYFEKDVKGE SLFHSSKSMDLRVNGEPLDL DPGQTLIYYVDEKAPEFSM
Specificity	Recombinant fusion protein containing a sequence corresponding to amino acids 24-266 of mouse Epcam. (NP_032558.2).

ADDITIONAL INFORMATION

Note STRICTLY FOR FURTHER SCIENTIFIC RESEARCH USE ONLY (RUO). MUST NOT TO BE USED IN DIAGNOSTIC OR THERAPEUTIC APPLICATIONS.



Western blot analysis of various lysates, using Epcam Rabbit polyclonal antibody (STJ11105178) at 1:1000 dilution. Secondary antibody: HRP Goat Anti-Rabbit IgG (H+L) (STJS000856) at 1:10000 dilution. Lysates/proteins: 25 Mu g per lane. Blocking buffer: 3% nonfat dry milk in TBST. Detection: ECL Basic Kit. Exposure time: 10s.