

Anti-GRP antibody (STJ11105168)

GENERAL INFORMATION

Product Type	Primary antibodies
Applications	WB/ELISA
Host / Source	Rabbit
Reactivity	Mouse

PRODUCT PROPERTIES

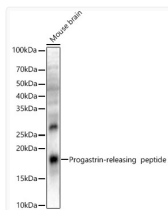
Clonality	Polyclonal
Concentration	Lot specific
Conjugation	Unconjugated
Purification	Affinity purification
Dilution Range	WB:1:500-1:1000 ELISA:Recommended starting concentration is 1 Mu g/mL. Please optimize the concentration based on your specific assay requirements.
Formulation	PBS with 0.02% Sodium Azide, 50% Glycerol, pH 7.3.
Isotype	IgG
Molecular Weight	Protein Mw: 16kDa Observed Mw: 16kDa
Storage Instruction	Store at -20°C for up to 1 year from the date of receipt, and avoid repeat freeze-thaw cycles.

TARGET INFORMATION

Gene ID	2922
Gene Symbol	GRP
UniProt ID	GRP_HUMAN
Immunogen Sequence	MRGRELPLVLLALVLCLAPR GRAVPLPAGGGTVLTKMYPR GNHWAVGHLMGKKSTGESSS VSEKSLKQQLREYIRWEEA ARNLLGLIEAKENRNHQPQ PKALGNQQPSWDESDSSNFK DVGSKGKVGRLSAPGSQREG RNPQLNQQ
Specificity	Recombinant protein of human progastrin-releasing peptide.

ADDITIONAL INFORMATION

Note STRICTLY FOR FURTHER SCIENTIFIC RESEARCH USE ONLY (RUO). MUST NOT TO BE USED IN DIAGNOSTIC OR THERAPEUTIC APPLICATIONS.



Western blot analysis of Mouse brain, using Progastrin-releasing peptide Rabbit polyclonal antibody (STJ11105168) at 1:1000 dilution. Secondary antibody: HRP Goat Anti-Rabbit IgG (H+L) (STJS000856) at 1:10000 dilution. Lysates/proteins: 25 Mu g per lane. Blocking buffer: 3% nonfat dry milk in TBST. Detection: ECL Enhanced Kit. Exposure time: 180s.