

Anti-CDK5 antibody (92-289 aa) [S5132RM] (STJ11105132)

GENERAL INFORMATION

Product Type	Primary antibodies
Applications	WB/ELISA
Host / Source	Rabbit
Reactivity	Human/Mouse/Rat

PRODUCT PROPERTIES

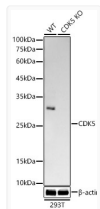
Clonality	Monoclonal
Concentration	Lot specific
Conjugation	Unconjugated
Purification	Affinity purification
Dilution Range	WB:1:1000-1:5000 ELISA:Recommended starting concentration is 1 Mu g/mL. Please optimize the concentration based on your specific assay requirements.
Formulation	PBS with 0.05% Proclin300, 0.05% BSA, 50% Glycerol, pH 7.3.
Isotype	IgG
Molecular Weight	Protein Mw: 33kDa Observed Mw: 33kDa
Storage Instruction	Store at-20°C for up to 1 year from the date of receipt, and avoid repeat freeze-thaw cycles.

TARGET INFORMATION

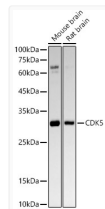
Gene ID	1020
Gene Symbol	CDK5
UniProt ID	CDK5_HUMAN
Immunogen Region	92-289 aa
Immunogen Sequence	DSCNGDLDP EIVKSF L FQLL KGLGFCHSRNVLHRDLK PQN LLINRNGELKLADFLARAF GIPVRCYSAE VVTLWYRPPD VLF GAKLYSTSIDMWSAGCI FAELANAGRPLFP GNDVDDQ LKRIFRLLGTPTEE QWPSMT KLPDYKPYMPATTSLVNV VP KLNATGRDLLQNLKCNP VQRISAEELQHPYFSD F
Specificity	Recombinant fusion protein containing a sequence corresponding to amino acids 92-289 of human CDK5. (NP_004926.1).

ADDITIONAL INFORMATION

Note **STRICTLY FOR FURTHER SCIENTIFIC RESEARCH USE ONLY (RUO). MUST NOT TO BE USED IN DIAGNOSTIC OR THERAPEUTIC APPLICATIONS.**



Western blot analysis of lysates from wild type (WT) and CDK5 knockout (KO) 293T cells, using [KO Validated] CDK5 Rabbit monoclonal antibody (STJ11105132) at 1:2000 dilution. Secondary antibody: HRP Goat Anti-Rabbit IgG (H+L) (STJS000856) at 1:10000 dilution. Lysates/proteins: 25 Mu g per lane. Blocking buffer: 3% nonfat dry milk in TBST. Detection: ECL Basic Kit. Exposure time: 180s.



Western blot analysis of various lysates, using [KO Validated] CDK5 Rabbit monoclonal antibody (STJ11105132) at 1:2000 dilution. Secondary antibody: HRP Goat Anti-Rabbit IgG (H+L) (STJS000856) at 1:10000 dilution. Lysates/proteins: 25 Mu g per lane. Blocking buffer: 3% nonfat dry milk in TBST. Detection: ECL Basic Kit. Exposure time: 180s.