

## Anti-MMP2 antibody (451-660) [S5128RM] (STJ11105128)

### GENERAL INFORMATION

Product Type	Primary antibodies
Applications	WB/ELISA
Host / Source	Rabbit
Reactivity	Human/Mouse/Rat

### PRODUCT PROPERTIES

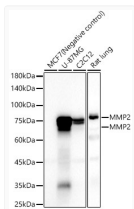
Clonality	Monoclonal
Concentration	Lot specific
Conjugation	Unconjugated
Purification	Affinity purification
Dilution Range	WB:1:1000-1:2000 ELISA:Recommended starting concentration is 1 µg/mL. Please optimize the concentration based on your specific assay requirements.
Formulation	PBS with 0.09% Sodium Azide, 0.05% BSA, 50% Glycerol, pH7.3.
Isotype	IgG
Molecular Weight	Protein Mw: 74kDa Observed Mw: 64kDa/72kDa
Storage Instruction	Store at -20°C for up to 1 year from the date of receipt, and avoid repeat freeze-thaw cycles.

### TARGET INFORMATION

Gene ID	<a href="#">4313</a>
Gene Symbol	<a href="#">MMP2</a>
UniProt ID	<a href="#">MMP2_HUMAN</a>
Immunogen Region	451-660
Immunogen Sequence	IDLGTGPTPTLGPVTPEICK QDIVFDGIAQIRGEIFFFKD RFIWRTVTPRDKPMGPLLVA TFWPELPEKIDAVYEAPQEE KAVFFAGNEYWIYSASTLER GYPKPLTSLGLPPDVQRVDA AFNWSKNKITYIFAGDKFWR YNEVKKKMDPGFPKLIADAW NAIPDNLDAVVDLQGGGHSY FFKGAYYLLKLENQSLKSVKF GSIKSDWLGC
Specificity	Recombinant fusion protein containing a sequence corresponding to amino acids 451-660 of human MMP2 (NP_004521.1).

### ADDITIONAL INFORMATION

Note **STRICTLY FOR FURTHER SCIENTIFIC RESEARCH USE ONLY (RUO). MUST NOT TO BE USED IN DIAGNOSTIC OR THERAPEUTIC APPLICATIONS.**



Western blot analysis of various lysates, using MMP2 Rabbit monoclonal antibody (STJ11105128) at 1:1000 dilution. Secondary antibody: HRP Goat Anti-Rabbit IgG (H+L) (STJS000856) at 1:10000 dilution. Lysates/proteins: 25 µg per lane. Blocking buffer: 3% nonfat dry milk in TBST. Detection: ECL Basic Kit. Exposure time: 60s.