

Anti-NFATC1 antibody (10-305) [S5126RM] (STJ11105126)

GENERAL INFORMATION

Product Type	Primary antibodies
Applications	WB/ELISA
Host / Source	Rabbit
Reactivity	Human/Mouse

PRODUCT PROPERTIES

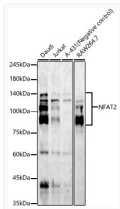
Clonality	Monoclonal
Concentration	Lot specific
Conjugation	Unconjugated
Purification	Affinity purification
Dilution Range	WB:1:3500-1:14000 ELISA:Recommended starting concentration is 1 Mu g/mL. Please optimize the concentration based on your specific assay requirements.
Formulation	PBS with 0.05% Proclin300, 0.05% BSA, 50% Glycerol, pH 7.3.
Isotype	IgG
Molecular Weight	Protein Mw: 101kDa Observed Mw: 75-140kDa
Storage Instruction	Store at -20°C for up to 1 year from the date of receipt, and avoid repeat freeze-thaw cycles.

TARGET INFORMATION

Gene ID	4772
Gene Symbol	NFATC1
UniProt ID	NFAC1_HUMAN
Immunogen Region	10-305
Immunogen Sequence	SKFPLGPAAAVFGRGETLGP APRAGGTMKSAEEHYGYAS SNVSPALPLPTAHSTLPAPC HNLQTSTPGIIPADHPSGY GAALDGGPAGYFLSSGHTRP DGAPALESPIREITSLGLY HNNNQFFHDVEVDVLPSSK RSPSTATLSLPSLEAYRDPSC LSPASSLSRSCNSEASSY ESNYSYPYASPQTSPWQSPC VSPKTTDPEEGFPRGLGACT LLGSPRHSPSTSPRASVTE
Specificity	Recombinant fusion protein containing a sequence corresponding to amino acids 10-305 of human NFAT2 (NP_001265598.1).

ADDITIONAL INFORMATION

Note **STRICTLY FOR FURTHER SCIENTIFIC RESEARCH USE ONLY (RUO). MUST NOT TO BE USED IN DIAGNOSTIC OR THERAPEUTIC APPLICATIONS.**



Western blot analysis of various lysates, using NFAT2 Rabbit monoclonal antibody (STJ11105126) at 1:2000 dilution. Secondary antibody: HRP Goat Anti-Rabbit IgG (H+L) (STJS000856) at 1:10000 dilution. Lysates/proteins: 25 Mu g per lane. Blocking buffer: 3% nonfat dry milk in TBST. Detection: ECL Enhanced Kit. Exposure time: 60s.