

Anti-EGFR antibody (320-420 aa) [S5117RM] (STJ11105117)

GENERAL INFORMATION

Product Type	Primary antibodies
Applications	WB/ELISA
Host / Source	Rabbit
Reactivity	Human

PRODUCT PROPERTIES

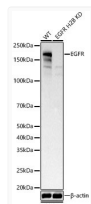
Clonality	Monoclonal
Concentration	Lot specific
Conjugation	Unconjugated
Purification	Affinity purification
Dilution Range	WB:1:500-1:1000 ELISA:Recommended starting concentration is 1 Mu g/mL. Please optimize the concentration based on your specific assay requirements.
Formulation	PBS with 0.05% Proclin300, 0.05% BSA, 50% Glycerol, pH 7.3.
Isotype	IgG
Molecular Weight	Protein Mw: 134kDa Observed Mw: 175kDa
Storage Instruction	Store at -20°C for up to 1 year from the date of receipt, and avoid repeat freeze-thaw cycles.

TARGET INFORMATION

Gene ID	1956
Gene Symbol	EGFR
UniProt ID	EGFR_HUMAN
Immunogen Region	320-420 aa
Immunogen Sequence	EDGVRKCKKCEGPCRKVCNG IGIGEFKDSLINATNIKHF KNCTSISGDLHILPVAFRGD SFTHTPPLDLPQELDILKTVK EITGFLLIQAWPENRTDLHA F
Specificity	Recombinant fusion protein containing a sequence corresponding to amino acids 320-420 of human EGFR. (NP_005219.2).

ADDITIONAL INFORMATION

Note STRICTLY FOR FURTHER SCIENTIFIC RESEARCH USE ONLY (RUO). MUST NOT TO BE USED IN DIAGNOSTIC OR THERAPEUTIC APPLICATIONS.



Western blot analysis of lysates from wild type (WT) and EGFR knockdown (KD) HeLa cells, using [KD Validated] EGFR Rabbit monoclonal antibody (STJ11105117) at 1:1000 dilution. Secondary antibody: HRP Goat Anti-Rabbit IgG (H+L) (STJS000856) at 1:10000 dilution. Lysates/proteins: 25 Mu g per lane. Blocking buffer: 3% nonfat dry milk in TBST. Detection: ECL Basic Kit. Exposure time: 30s.