

Anti-SOX1 antibody (1-100 aa) [S5115RM] (STJ11105115)

GENERAL INFORMATION

Product Type	Primary antibodies
Applications	WB/ELISA
Host / Source	Rabbit
Reactivity	Human/Mouse/Rat

PRODUCT PROPERTIES

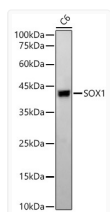
Clonality	Monoclonal
Concentration	Lot specific
Conjugation	Unconjugated
Purification	Affinity purification
Dilution Range	WB:1:500-1:2000 ELISA:Recommended starting concentration is 1 Mu g/mL. Please optimize the concentration based on your specific assay requirements.
Formulation	PBS with 0.09% Sodium Azide, 0.05% BSA, 50% Glycerol, pH7.3.
Isotype	IgG
Molecular Weight	Protein Mw: 39kDa Observed Mw: Refer to figures
Storage Instruction	Store at-20°C for up to 1 year from the date of receipt, and avoid repeat freeze-thaw cycles.

TARGET INFORMATION

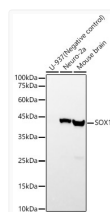
Gene ID	6656
Gene Symbol	SOX1
UniProt ID	SOX1_HUMAN
Immunogen Region	1-100 aa
Immunogen Sequence	MYSMMMETDLHSPGGAQAPT NLSGPAGAGGGGGGGGGGG GGGAKANQDRVKRP MNAFMV WSRGQRRKMAQENPKMHNSE ISKRLGAEWKVMSEAEKRPF
Specificity	Recombinant fusion protein containing a sequence corresponding to amino acids 1-100 of human SOX1. (NP_005977.2).

ADDITIONAL INFORMATION

Note STRICTLY FOR FURTHER SCIENTIFIC RESEARCH USE ONLY (RUO). MUST NOT TO BE USED IN DIAGNOSTIC OR THERAPEUTIC APPLICATIONS.



Western blot analysis of lysates from C6 cells, using SOX1 Rabbit monoclonal antibody (STJ11105115) at 1:2000 dilution. Secondary antibody: HRP Goat Anti-Rabbit IgG (H+L) (STJS000856) at 1:10000 dilution. Lysates/proteins: 25 Mu g per lane. Blocking buffer: 3% nonfat dry milk in TBST. Detection: ECL Basic Kit. Exposure time: 180s.



Western blot analysis of various lysates, using SOX1 Rabbit monoclonal antibody (STJ11105115) at 1:2000 dilution. Secondary antibody: HRP Goat Anti-Rabbit IgG (H+L) (STJS000856) at 1:10000 dilution. Lysates/proteins: 25 Mu g per lane. Blocking buffer: 3% nonfat dry milk in TBST. Detection: ECL Basic Kit. Exposure time: 10s.