

Anti-Recombinant-Sarm1 antibody (1-100) [S5113MM] (STJ11105113)

GENERAL INFORMATION

Product Type	Primary antibodies
Applications	WB/ELISA
Host / Source	Mouse
Reactivity	Human/Mouse/Rat

PRODUCT PROPERTIES

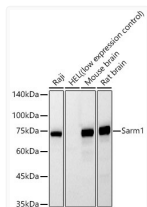
Clonality	Monoclonal
Concentration	Lot specific
Conjugation	Unconjugated
Purification	Affinity purification
Dilution Range	WB:1:2000-1:4000 ELISA:Recommended starting concentration is 1 µg/mL. Please optimize the concentration based on your specific assay requirements.
Formulation	PBS with 0.05% Proclin300, 50% Glycerol, pH 7.3.
Isotype	IgG1
Molecular Weight	Protein Mw: 79kDa Observed Mw: 72kDa/80kDa
Storage Instruction	Store at -20°C for up to 1 year from the date of receipt, and avoid repeat freeze-thaw cycles.

TARGET INFORMATION

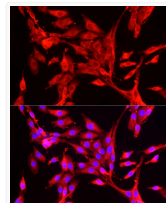
Gene ID	237868
Gene Symbol	Sarm1
UniProt ID	SARM1_MOUSE
Immunogen Region	1-100
Immunogen Sequence	MVLTLLFSAYKLCRFFFTMSG PRPGADRLTVPGPDRSGGAS PWWAAGGRGSREVSPGVGTE VQGALERSLPELQQALSELK QASAARAVGAGLAEVFQLVE
Specificity	A synthetic peptide corresponding to a sequence within amino acids 1-100 of mouse Sarm1 (NP_766383.2).

ADDITIONAL INFORMATION

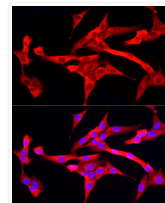
Note STRICTLY FOR FURTHER SCIENTIFIC RESEARCH USE ONLY (RUO). MUST NOT TO BE USED IN DIAGNOSTIC OR THERAPEUTIC APPLICATIONS.



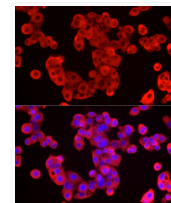
Western blot analysis of various lysates, using Sarm1 Mouse monoclonal antibody (STJ11105113) at 1:4000 dilution. Secondary antibody: HRP Goat Anti-Mouse IgG (H+L) (STJS000854) at 1:10000 dilution. Lysates/proteins: 25 µg per lane. Blocking buffer: 3% nonfat dry milk in TBST. Detection: ECL Basic Kit. Exposure time: 60s.



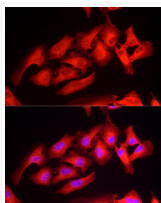
Immunofluorescence analysis of PC-12 cells using PRDX1/PRDX2 Rabbit polyclonal antibody at dilution of 1:50 (40x lens). Blue: DAPI for nuclear staining.



Immunofluorescence analysis of NIH/3T3 cells using PRDX1/PRDX2 Rabbit polyclonal antibody at dilution of 1:50 (40x lens). Blue: DAPI for nuclear staining.



Immunofluorescence analysis of HepG2 cells using PRDX1/PRDX2 Rabbit polyclonal antibody at dilution of 1:50 (40x lens). Blue: DAPI for nuclear staining.



Immunofluorescence analysis of HeLa cells using PRDX1/PRDX2 Rabbit polyclonal antibody at dilution of 1:50 (40x lens). Blue: DAPI for nuclear staining.