

Anti-PRDX2 antibody (1-142) (STJ11105112)

GENERAL INFORMATION

Product Type	Primary antibodies
Applications	IF/ICC/ELISA
Host / Source	Rabbit
Reactivity	Human/Mouse/Rat

PRODUCT PROPERTIES

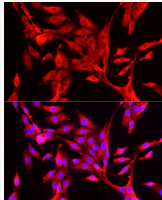
Clonality	Polyclonal
Concentration	Lot specific
Conjugation	Unconjugated
Purification	Affinity purification
Dilution Range	IF/ICC:1:50-1:200 ELISA:Recommended starting concentration is 1 µg/mL. Please optimize the concentration based on your specific assay requirements.
Formulation	PBS with 0.02% Sodium Azide, 50% Glycerol, pH 7.3.
Isotype	IgG
Molecular Weight	Protein Mw: 22kDa Observed Mw: Refer to figures
Storage Instruction	Store at -20°C for up to 1 year from the date of receipt, and avoid repeat freeze-thaw cycles.

TARGET INFORMATION

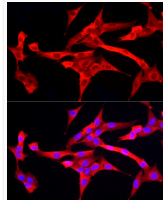
Gene ID	5052
Gene Symbol	PRDX1
UniProt ID	PRDX1_HUMAN
Immunogen Region	1-142
Immunogen Sequence	PMNIPLVSDPKRTIAQDYGV LKADEGISFRGLFIIDDKGI LRQITVNDLPVGRSVDETLR LVQAFQFTDKHGEVCPAGWK PGSDTIKPDVQKSKEYFSKQ K
Specificity	A synthetic peptide corresponding to a sequence within amino acids 99-199 of human Peroxiredoxin 1/PAG (NP_001189360.1).

ADDITIONAL INFORMATION

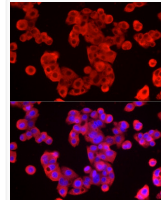
Note STRICTLY FOR FURTHER SCIENTIFIC RESEARCH USE ONLY (RUO). MUST NOT TO BE USED IN DIAGNOSTIC OR THERAPEUTIC APPLICATIONS.



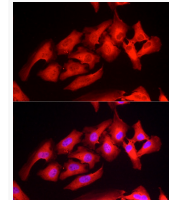
Immunofluorescence analysis of PC-12 cells using PRDX1/PRDX2 Rabbit polyclonal antibody (STJ11105112) at dilution of 1:50 (40x lens). Blue: DAPI for nuclear staining.



Immunofluorescence analysis of NIH/3T3 cells using PRDX1/PRDX2 Rabbit polyclonal antibody (STJ11105112) at dilution of 1:50 (40x lens). Blue: DAPI for nuclear staining.



Immunofluorescence analysis of HepG2 cells using PRDX1/PRDX2 Rabbit polyclonal antibody (STJ11105112) at dilution of 1:50 (40x lens). Blue: DAPI for nuclear staining.



Immunofluorescence analysis of HeLa cells using PRDX1/PRDX2 Rabbit polyclonal antibody (STJ11105112) at dilution of 1:50 (40x lens). Blue: DAPI for nuclear staining.