

## Anti-CASP1 antibody (200-300) [S5107RM] (STJ11105107)

### GENERAL INFORMATION

Product Type	Primary antibodies
Applications	WB/ELISA
Host / Source	Rabbit
Reactivity	Human

### PRODUCT PROPERTIES

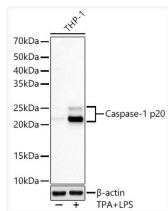
Clonality	Monoclonal
Concentration	Lot specific
Conjugation	Unconjugated
Purification	Affinity purification
Dilution Range	WB:1:2000-1:8000 ELISA:Recommended starting concentration is 1 Mu g/mL. Please optimize the concentration based on your specific assay requirements.
Formulation	PBS with 0.05% Proclin300, 0.05% BSA, 50% Glycerol, pH 7.3.
Isotype	IgG
Molecular Weight	Protein Mw: 10KDa/29KDa/35KDa/42KDa/45KDa Observed Mw: 20-25kDa
Storage Instruction	Store at-20°C for up to 1 year from the date of receipt, and avoid repeat freeze-thaw cycles.

### TARGET INFORMATION

Gene ID	<a href="#">834</a>
Gene Symbol	<a href="#">CASP1</a>
UniProt ID	<a href="#">CASP1_HUMAN</a>
Immunogen Region	200-300
Immunogen Sequence	DVKKNLTASDMTTELEAFAH RPEHKTS DSTFLVFM SHGIR EGICGKKHSEQVPDILQLNA IFNMLNTKNCPSLKD KPKVI IIQACRGD SPGVVWFKDSVG
Specificity	A synthetic peptide corresponding to a sequence within amino acids 200-300 of human Caspase-1 p20 (NP_001244047.1).

### ADDITIONAL INFORMATION

Note STRICTLY FOR FURTHER SCIENTIFIC RESEARCH USE ONLY (RUO). MUST NOT TO BE USED IN DIAGNOSTIC OR THERAPEUTIC APPLICATIONS.



Western blot analysis of THP-1, using Caspase-1 p20 Rabbit monoclonal antibody (STJ11105107) at 1:2000 dilution. THP-1 cells were treated by PMA/TPA (80 nM) at 37 °C for overnight and LPS (1 Mu g/ml) at 37 °C for 6 hours. Secondary antibody: HRP Goat Anti-Rabbit IgG (H+L) (STJS00856) at 1:10000 dilution. Lysates/proteins: 25 Mu g per lane. Blocking buffer: 3% nonfat dry milk in TBST. Detection: ECL Basic Kit. Exposure time: 30s.