

## Anti-MDM2 antibody (101-200) [S5095RM] (STJ11105095)

### GENERAL INFORMATION

Product Type	Primary antibodies
Applications	IHC-P/ELISA
Host / Source	Rabbit
Reactivity	Human

### PRODUCT PROPERTIES

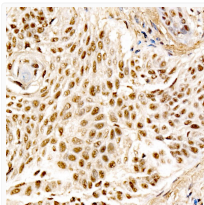
Clonality	Monoclonal
Concentration	Lot specific
Conjugation	Unconjugated
Purification	Affinity purification
Dilution Range	IHC-P:1:50-1:200 ELISA:Recommended starting concentration is 1 µg/mL. Please optimize the concentration based on your specific assay requirements.
Formulation	PBS with 0.05% Proclin300, 0.05% BSA, 50% Glycerol, pH 7.3.
Isotype	IgG
Molecular Weight	Protein Mw: 55kDa Observed Mw: Refer to figures
Storage Instruction	Store at -20°C for up to 1 year from the date of receipt, and avoid repeat freeze-thaw cycles.

### TARGET INFORMATION

Gene ID	<a href="#">4193</a>
Gene Symbol	<a href="#">MDM2</a>
UniProt ID	<a href="#">MDM2_HUMAN</a>
Immunogen Region	101-200
Immunogen Sequence	TMIYRNLVVVNQQESSDSGT SVSENRCHLEGGSDQKDLVQ ELQEEKPSSSHLVSRPSTSS RRRAISETEENSDELSEGERQ RKRHKSDSISLSFDESLALC
Specificity	A synthetic peptide corresponding to a sequence within amino acids 101-200 of human MDM2 (NP_001354919.1).

### ADDITIONAL INFORMATION

Note STRICTLY FOR FURTHER SCIENTIFIC RESEARCH USE ONLY (RUO). MUST NOT TO BE USED IN DIAGNOSTIC OR THERAPEUTIC APPLICATIONS.



Immunohistochemistry analysis of MDM2 in paraffin-embedded human lung squamous carcinoma tissue using MDM2 Rabbit monoclonal antibody (STJ11105095) at dilution of 1:100 (40x lens). Perform high pressure antigen retrieval with 10 mM citrate buffer pH 6.0 before commencing with immunohistochemistry staining protocol.