

Anti-CD275 antibody (47-270 aa) (STJ11105078)

GENERAL INFORMATION

Product Type	Primary antibodies
Applications	WB/ELISA
Host / Source	Rabbit
Reactivity	Mouse

PRODUCT PROPERTIES

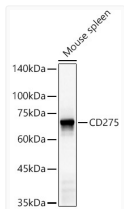
Clonality	Polyclonal
Concentration	Lot specific
Conjugation	Unconjugated
Purification	Affinity purification
Dilution Range	WB:1:500-1:2000 ELISA:Recommended starting concentration is 1 µg/mL. Please optimize the concentration based on your specific assay requirements.
Formulation	PBS with 0.02% Sodium Azide, 50% Glycerol, pH 7.3.
Isotype	IgG
Molecular Weight	Protein Mw: 36kDa Observed Mw: 65-75kDa
Storage Instruction	Store at -20°C for up to 1 year from the date of receipt, and avoid repeat freeze-thaw cycles.

TARGET INFORMATION

Gene ID	50723
Gene Symbol	Icoslg
UniProt ID	ICOSL_MOUSE
Immunogen Region	47-270 aa
Immunogen Sequence	ETEVGAMVGSNNVLSCIDPH RRHFNLISGLYVYVQIENPEV SVTYLPPYKSPGINVDSSYK NRGHLSLDSMKQGNFSLYLK NVTPQDTQEFTCRVFMNTAT ELVKILEEVVRLRVAANFST PVISTSDSSNPGQERTYTCM SKNGYPEPNLYWINTTDNSL IDTALQNNVTYYLNKLGLYDV ISTLRLPWTSRGDVLCCVEN VALHQNITSISQAESFTGNN TKNP
Specificity	Recombinant fusion protein containing a sequence corresponding to amino acids 47-270 of human CD275. (NP_056605.1).

ADDITIONAL INFORMATION

Note STRICTLY FOR FURTHER SCIENTIFIC RESEARCH USE ONLY (RUO). MUST NOT TO BE USED IN DIAGNOSTIC OR THERAPEUTIC APPLICATIONS.



Western blot analysis of Mouse spleen, using CD275 Rabbit polyclonal antibody (STJ11105078) at 1:1500 dilution. Secondary antibody: HRP Goat Anti-Rabbit IgG (H+L) (STJS000856) at 1:10000 dilution. Lysates/proteins: 25 µg per lane. Blocking buffer: 3% nonfat dry milk in TBST. Detection: ECL Basic Kit. Exposure time: 180s.