

Anti-PRMT8 antibody (200-380) (STJ11105071)

GENERAL INFORMATION

Product Type	Primary antibodies
Applications	WB/ELISA
Host / Source	Rabbit
Reactivity	Human/Mouse

PRODUCT PROPERTIES

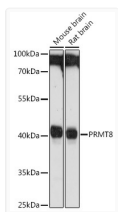
Clonality	Polyclonal
Concentration	Lot specific
Conjugation	Unconjugated
Purification	Affinity purification
Dilution Range	WB:1:500-1:1000 ELISA:Recommended starting concentration is 1 Mu g/mL. Please optimize the concentration based on your specific assay requirements.
Formulation	PBS with 0.01% Thimerosal, 50% Glycerol, pH 7.3.
Isotype	IgG
Molecular Weight	Protein Mw: 45kDa Observed Mw: 45kDa
Storage Instruction	Store at-20°C for up to 1 year from the date of receipt, and avoid repeat freeze-thaw cycles.

TARGET INFORMATION

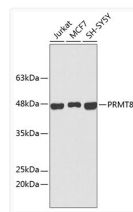
Gene ID	56341
Gene Symbol	PRMT8
UniProt ID	ANM8_HUMAN
Immunogen Region	200-380
Immunogen Sequence	VIFARDKWLKPGGLMFPDRA ALYVVAIEDRQYKDFKIHWW ENVYGFDMTCIRDVAMKEPL VDIVDPKQVVTNACLIKEVD IYTVKTEELSFTSAFCLQIQ RNDYVHALVTYFNIEFTKCH KKMGFSTAPDAPYTHWKQTV FYLEDYLTVRRGEEIYGTIS MKPNAKNVRDLDFVLDLDFK G
Specificity	Recombinant fusion protein containing a sequence corresponding to amino acids 200-380 of human PRMT8 (NP_062828.3).

ADDITIONAL INFORMATION

Note STRICTLY FOR FURTHER SCIENTIFIC RESEARCH USE ONLY (RUO). MUST NOT TO BE USED IN DIAGNOSTIC OR THERAPEUTIC APPLICATIONS.



Western blot analysis of various lysates using PRMT8 Rabbit polyclonal antibody (STJ11105071) at 1:1000 dilution. Secondary antibody: HRP Goat Anti-Rabbit IgG (H+L) (STJS000856) at 1:10000 dilution. Lysates/proteins: 25 Mu g per lane. Blocking buffer: 3% nonfat dry milk in TBST. Detection: ECL Basic Kit. Exposure time: 60s.



Western blot analysis of various lysates using PRMT8 Rabbit polyclonal antibody (STJ11105071). Secondary antibody: HRP Goat Anti-Rabbit IgG (H+L) (STJS000856) at 1:10000 dilution. Lysates/proteins: 25 Mu g per lane. Blocking buffer: 3% nonfat dry milk in TBST.