

## Anti-CD4 antibody (27-394 aa) (STJ11105070)

### GENERAL INFORMATION

Product Type	Primary antibodies
Applications	WB/IF/ICC/ELISA
Host / Source	Rabbit
Reactivity	Human/Mouse

### PRODUCT PROPERTIES

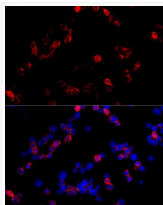
Clonality	Polyclonal
Concentration	Lot specific
Conjugation	Unconjugated
Purification	Affinity purification
Dilution Range	WB:1:500-1:1000 IF/CC:1:50-1:200 ELISA:Recommended starting concentration is 1 Mu g/mL. Please optimize the concentration based on your specific assay requirements.
Formulation	PBS with 0.05% Proclin300, 50% Glycerol, pH 7.3.
Isotype	IgG
Molecular Weight	Protein Mw: 51kDa Observed Mw: 55kDa
Storage Instruction	Store at -20°C for up to 1 year from the date of receipt, and avoid repeat freeze-thaw cycles.

### TARGET INFORMATION

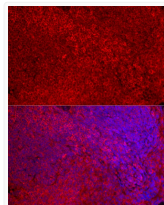
Gene ID	<a href="#">12504</a>
Gene Symbol	<a href="#">Cd4</a>
UniProt ID	<a href="#">CD4_MOUSE</a>
Immunogen Region	27-394 aa
Immunogen Sequence	KTLVLGKEGESAELPCESSQ KKITVFTWKFSDQRKILGQH GKGVLIRGGSPSQFDRFDSK KGAWEKGSFPLIINKLMED SQTICYCELENRKEEVELWVF KVTFSPTSLQGGSLTLTL DSNSKVSNPLTECKHKKGKV VSGSKVLSMSNLRVQDSDFW NCTVTLDQKKNWFGMTLSVL GFQSTAITAYKSEGESAEFS FPLNFAEENGWGLMWWKAEK DSFFQPWISFSIKNKEVSV
Specificity	Recombinant fusion protein containing a sequence corresponding to amino acids 27-394 of mouse CD4. (NP_038516.1).

### ADDITIONAL INFORMATION

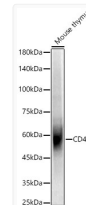
Note STRICTLY FOR FURTHER SCIENTIFIC RESEARCH USE ONLY (RUO). MUST NOT TO BE USED IN DIAGNOSTIC OR THERAPEUTIC APPLICATIONS.



Immunofluorescence analysis of THP-1 cells using CD4 Rabbit polyclonal antibody (STJ11105070) at dilution of 1:50 (40x lens). Blue: DAPI for nuclear staining.



Immunofluorescence analysis of mouse spleen cells using CD4 Rabbit polyclonal antibody (STJ11105070) at dilution of 1:50 (40x lens). Blue: DAPI for nuclear staining.



Western blot analysis of Mouse thymus, using CD4 Rabbit polyclonal antibody (STJ11105070) at 1:500 dilution. Secondary antibody: HRP Goat Anti-Rabbit IgG (H+L) (STJS000856) at 1:10000 dilution. Lysates/proteins: 25 Mu g per lane. Blocking buffer: 3% nonfat dry milk in TBST. Detection: ECL Basic Kit. Exposure time: 30s.