

Anti-CD11b antibody (143-337 aa) (STJ11105067)

GENERAL INFORMATION

Product Type	Primary antibodies
Applications	WB/IHC-P/ELISA
Host / Source	Rabbit
Reactivity	Human/Mouse/Rat

PRODUCT PROPERTIES

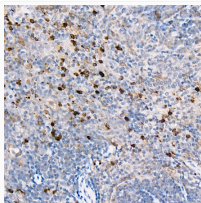
Clonality	Polyclonal
Concentration	Lot specific
Conjugation	Unconjugated
Purification	Affinity purification
Dilution Range	WB:1:500-1:2000 IHC-P:1:50-1:200 ELISA:Recommended starting concentration is 1 µg/mL. Please optimize the concentration based on your specific assay requirements.
Formulation	PBS with 0.05% Proclin300, 50% Glycerol, pH 7.3.
Isotype	IgG
Molecular Weight	Protein Mw: 127kDa Observed Mw: 170kDa
Storage Instruction	Store at -20°C for up to 1 year from the date of receipt, and avoid repeat freeze-thaw cycles.

TARGET INFORMATION

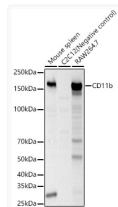
Gene Symbol	Itgam Uniprot ID= ITAM_MOUSE [®]
Immunogen Region	143-337 aa
Immunogen Sequence	ECPQEQSDIVFLIDGSGSIN NIDFQKMKEFVSTVMEQFKK SKTLFSLMQYSDEFRIHFTF NDFKRNPPRSHVSPKQLN GRKTASGIRKVVRELFHKT NGARENAAKILVVITDGEKF GDPLDYKDVPEADRAGVIR YVIGVGNAFNKPQSRRELDI IASKPAGEHVFQVDNFEALN TIQNQLQEKIFAIEG
Specificity	Recombinant fusion protein containing a sequence corresponding to amino acids 143-337 of mouse CD11b (NP_032427.2).

ADDITIONAL INFORMATION

Note STRICTLY FOR FURTHER SCIENTIFIC RESEARCH USE ONLY (RUO). MUST NOT TO BE USED IN DIAGNOSTIC OR THERAPEUTIC APPLICATIONS.



Immunohistochemistry analysis of paraffin-embedded mouse spleen using CD11b Rabbit polyclonal antibody (STJ11105067) at dilution of 1:100 (40x lens). Perform high pressure antigen retrieval with 10 mM citrate buffer pH 6.0 before commencing with immunohistochemistry staining protocol.



Western blot analysis of various lysates, using CD11b Rabbit polyclonal antibody (STJ11105067) at 1:2000 dilution. Secondary antibody: HRP Goat Anti-Rabbit IgG (H+L) (STJS000856) at 1:10000 dilution. Lysates/proteins: 25 µg per lane. Blocking buffer: 3% nonfat dry milk in TBST. Detection: ECL Basic Kit. Exposure time: 10s.