

Anti-CYP27A1 antibody (431-530) [S5065RM] (STJ11105065)

GENERAL INFORMATION

Product Type	Primary antibodies
Applications	WB/ELISA
Host / Source	Rabbit
Reactivity	Human/Mouse/Rat

PRODUCT PROPERTIES

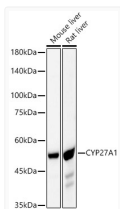
Clonality	Monoclonal
Concentration	Lot specific
Conjugation	Unconjugated
Purification	Affinity purification
Dilution Range	WB:1:1000-1:5000 ELISA:Recommended starting concentration is 1 μ g/mL. Please optimize the concentration based on your specific assay requirements.
Formulation	PBS with 0.05% Proclin300, 0.05% BSA, 50% Glycerol, pH 7.3.
Isotype	IgG
Molecular Weight	Protein Mw: 60kDa Observed Mw: 55kDa
Storage Instruction	Store at -20°C for up to 1 year from the date of receipt, and avoid repeat freeze-thaw cycles.

TARGET INFORMATION

Gene ID	1593
Gene Symbol	CYP27A1
UniProt ID	CP27A_HUMAN
Immunogen Region	431-530
Immunogen Sequence	VSRDPTAFSEPEFQPHRWL RNSQPATPRIQHFPFGSVVFPF YGVRACLGRRIAELMQLLL ARLIQYKVVLPAPETGELKS VARIVLVPNKKVGLQFLQRQ
Specificity	A synthetic peptide corresponding to a sequence within amino acids 431-530 of human CYP27A1 (NP_000775.1).

ADDITIONAL INFORMATION

Note STRICTLY FOR FURTHER SCIENTIFIC RESEARCH USE ONLY (RUO). MUST NOT TO BE USED IN DIAGNOSTIC OR THERAPEUTIC APPLICATIONS.



Western blot analysis of various lysates, using CYP27A1 Rabbit monoclonal antibody (STJ11105065) at 1:5000 dilution. Secondary antibody: HRP Goat Anti-Rabbit IgG (H+L) (STJS000856) at 1:10000 dilution. Lysates/proteins: 25 μ g per lane. Blocking buffer: 3% nonfat dry milk in TBST. Detection: ECL Basic Kit. Exposure time: 30s.