

## Anti-BID antibody (1-195) [S5057RM] (STJ11105057)

### GENERAL INFORMATION

Product Type	Primary antibodies
Applications	WB/ELISA
Host / Source	Rabbit
Reactivity	Human

### PRODUCT PROPERTIES

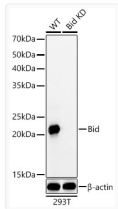
Clonality	Monoclonal
Concentration	Lot specific
Conjugation	Unconjugated
Purification	Affinity purification
Dilution Range	WB:1:500-1:1000 ELISA:Recommended starting concentration is 1 Mu g/mL. Please optimize the concentration based on your specific assay requirements.
Formulation	PBS with 0.05% Proclin300, 0.05% BSA, 50% Glycerol, pH 7.3.
Isotype	IgG
Molecular Weight	Protein Mw: 22kDa Observed Mw: 22kDa
Storage Instruction	Store at -20°C for up to 1 year from the date of receipt, and avoid repeat freeze-thaw cycles.

### TARGET INFORMATION

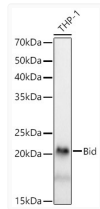
Gene ID	<a href="#">637</a>
Gene Symbol	<a href="#">BID</a>
UniProt ID	<a href="#">BID_HUMAN</a>
Immunogen Region	1-195
Immunogen Sequence	MDCEVNNGSSRLRDECITNLL VFGFLQSCSDNSFRRELDAL GHPELVLPAPQWEGYDELTQD GNRSSHSRLGRIEADSESQE DIIRNIARHLAQVGDSDMDRS IPPGLVNGLALQLRNTSRSE EDRNRDLATALEQLLQAYPR DMEKEKTMVLVALLAKKVA SHTPSLLRDVFHTTVNFINQ NLRITYVRSRLRANGMD
Specificity	Recombinant fusion protein containing a sequence corresponding to amino acids 1-195 of human Bid (NP_001187.1).

### ADDITIONAL INFORMATION

Note **STRICTLY FOR FURTHER SCIENTIFIC RESEARCH USE ONLY (RUO). MUST NOT TO BE USED IN DIAGNOSTIC OR THERAPEUTIC APPLICATIONS.**



Western blot analysis of lysates from wild type (WT) and Bid Rabbit monoclonal antibody knockdown (KD) 293T (KD) cells, using Bid Rabbit monoclonal antibody (STJ11105057) at 1:1000 dilution. Secondary antibody: HRP Goat Anti-Rabbit IgG (H+L) (STJS000856) at 1:10000 dilution. Lysates/proteins: 25 Mu g per lane. Blocking buffer: 3% nonfat dry milk in TBST. Detection: ECL Basic Kit. Exposure time: 30s.



Western blot analysis of lysates from THP-1 cells, using Bid Rabbit monoclonal antibody (STJ11105057) at 1:1000 dilution. Secondary antibody: HRP Goat Anti-Rabbit IgG (H+L) (STJS000856) at 1:10000 dilution. Lysates/proteins: 25 Mu g per lane. Blocking buffer: 3% nonfat dry milk in TBST. Detection: ECL Basic Kit. Exposure time: 30s.