

Anti-GHRH antibody (1-100 aa) [S5055RM] (STJ11105055)

GENERAL INFORMATION

Product Type	Primary antibodies
Applications	WB/ELISA
Host / Source	Rabbit
Reactivity	Human

PRODUCT PROPERTIES

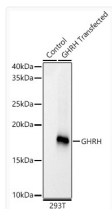
Clonality	Monoclonal
Concentration	Lot specific
Conjugation	Unconjugated
Purification	Affinity purification
Dilution Range	WB:1:500-1:1000 ELISA:Recommended starting concentration is 1 Mu g/mL. Please optimize the concentration based on your specific assay requirements.
Formulation	PBS with 0.05% Proclin300, 0.05% BSA, 50% Glycerol, pH 7.3.
Isotype	IgG
Molecular Weight	Protein Mw: 12kDa Observed Mw: 17kDa
Storage Instruction	Store at -20°C for up to 1 year from the date of receipt, and avoid repeat freeze-thaw cycles.

TARGET INFORMATION

Gene ID	2691
Gene Symbol	GHRH
UniProt ID	SLIB_HUMAN
Immunogen Region	1-100 aa
Immunogen Sequence	MPLWVFFFVILTLSNSSHCS PPPPLTLRMRRYADAIFTNS YRKVLGQLSARKLLQDIMSR QQGESNQERGARARLGRQVD SMWAEQKQMELESILVALLQ
Specificity	Recombinant fusion protein containing a sequence corresponding to amino acids 1-100 of human GHRH. (NP_066567.1).

ADDITIONAL INFORMATION

Note STRICTLY FOR FURTHER SCIENTIFIC RESEARCH USE ONLY (RUO). MUST NOT TO BE USED IN DIAGNOSTIC OR THERAPEUTIC APPLICATIONS.



Western blot analysis of lysates from wild type (WT) and 293T cells transfected with GHRH using GHRH Rabbit monoclonal antibody (STJ11105055) at 1:1000 dilution. Secondary antibody: HRP Goat Anti-Rabbit IgG (H+L) (STJS000856) at 1:10000 dilution. Lysates/proteins: 25 Mu g per lane. Blocking buffer: 3% nonfat dry milk in TBST. Detection: ECL Basic Kit. Exposure time: 30s.