

Anti-BUB1 antibody (1-150 aa) [S5045RM] (STJ11105045)

GENERAL INFORMATION

Product Type	Primary antibodies
Applications	WB/ELISA
Host / Source	Rabbit
Reactivity	Human/Mouse

PRODUCT PROPERTIES

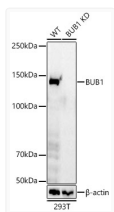
Clonality	Monoclonal
Concentration	Lot specific
Conjugation	Unconjugated
Purification	Affinity purification
Dilution Range	WB:1:500-1:1000 ELISA:Recommended starting concentration is 1 Mu g/mL. Please optimize the concentration based on your specific assay requirements.
Formulation	PBS with 0.05% Proclin300, 0.05% BSA, 50% Glycerol, pH 7.3.
Isotype	IgG
Molecular Weight	Protein Mw: 115KDa/120KDa/122KDa Observed Mw: 122kDa
Storage Instruction	Store at -20°C for up to 1 year from the date of receipt, and avoid repeat freeze-thaw cycles.

TARGET INFORMATION

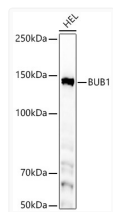
Gene ID	699
Gene Symbol	BUB1
UniProt ID	BUB1_HUMAN
Immunogen Region	1-150 aa
Immunogen Sequence	MDTPENVLQMLEAHMQSYKG NDPLGEWERYIQWVEENFPE NKEYLITLLEHLMKEFLDKK KYHNDPRFISYCLKFAEYNS DLHQFFFLYNHGIGTLSSP LYIAWAGHLEAQGELQHASA VLQRGIQNQAEPREFLQQQY RLFQTRLTET
Specificity	Recombinant fusion protein containing a sequence corresponding to amino acids 1-150 of human BUB1. (NP_004327.1).

ADDITIONAL INFORMATION

Note **STRICTLY FOR FURTHER SCIENTIFIC RESEARCH USE ONLY (RUO). MUST NOT TO BE USED IN DIAGNOSTIC OR THERAPEUTIC APPLICATIONS.**



Western blot analysis of lysates from wild type (WT) and BUB1 Rabbit monoclonal antibody knockdown (KD) 293T (KD) cells, using BUB1 Rabbit monoclonal antibody (STJ11105045) at 1:1000 dilution. Secondary antibody: HRP Goat Anti-Rabbit IgG (H+L) (STJS000856) at 1:10000 dilution. Lysates/proteins: 25 Mu g per lane. Blocking buffer: 3% nonfat dry milk in TBST. Detection: ECL Basic Kit. Exposure time: 60s.



Western blot analysis of lysates from HEL cells, using BUB1 Rabbit monoclonal antibody (STJ11105045) at 1:1000 dilution. Secondary antibody: HRP Goat Anti-Rabbit IgG (H+L) (STJS000856) at 1:10000 dilution. Lysates/proteins: 25 Mu g per lane. Blocking buffer: 3% nonfat dry milk in TBST. Detection: ECL Basic Kit. Exposure time: 60s.