

Anti-CDCP1 antibody (30-666) [S5038RM] (STJ11105038)

GENERAL INFORMATION

Product Type	Primary antibodies
Applications	WB/ELISA
Host / Source	Rabbit
Reactivity	Human

PRODUCT PROPERTIES

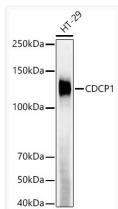
Clonality	Monoclonal
Concentration	Lot specific
Conjugation	Unconjugated
Purification	Affinity purification
Dilution Range	WB:1:10000-1:30000 ELISA:Recommended starting concentration is 1 µg/mL. Please optimize the concentration based on your specific assay requirements.
Formulation	PBS with 0.05% Proclin300, 0.05% BSA, 50% Glycerol, pH 7.3.
Isotype	IgG
Molecular Weight	Protein Mw: 93kDa Observed Mw: 70/140kDa
Storage Instruction	Store at -20°C for up to 1 year from the date of receipt, and avoid repeat freeze-thaw cycles.

TARGET INFORMATION

Gene ID	64866
Gene Symbol	CDCP1
UniProt ID	CDCP1_HUMAN
Immunogen Region	30-666
Immunogen Sequence	FEIALPRESNITVLIKLGTP TLLAKPCYIVISKRHITMLS IKSGERIVFTFSCQSPENHF VIEIQKNIDCMMSGPCPFGEV QLQPSTSLPLTLNRTFIWDV KAHKSIGLELQFSIPRLRQI GPGESCPDGVTHSISGRIDA TVVRIGTFCNNGTVSRIKMQ EGVKMALHLPWFHPRNVSGF SIANRSSIKRLCIIESVFEG EGSATLMSANYPEGFPEDEL MTWQFVVPAPHLRASVSFLN
Specificity	Recombinant fusion protein containing a sequence corresponding to amino acids 30-666 of human CDCP1 (NP_073753.3).

ADDITIONAL INFORMATION

Note STRICTLY FOR FURTHER SCIENTIFIC RESEARCH USE ONLY (RUO). MUST NOT TO BE USED IN DIAGNOSTIC OR THERAPEUTIC APPLICATIONS.



Western blot analysis of HT-29, using CDCP1 Rabbit monoclonal antibody (STJ11105038) at 1:2000 dilution. Secondary antibody: HRP Goat Anti-Rabbit IgG (H+L) (STJS000856) at 1:10000 dilution. Lysates/proteins: 25 µg per lane. Blocking buffer: 3% nonfat dry milk in TBST. Detection: ECL Enhanced Kit. Exposure time: 90s.