

Anti-IFN gamma antibody (20-153) [S5031RM] (STJ11105031)

GENERAL INFORMATION

Product Type	Primary antibodies
Applications	WB/ELISA
Host / Source	Rabbit
Reactivity	Mouse/Rat

PRODUCT PROPERTIES

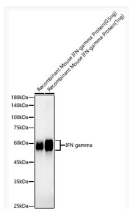
Clonality	Monoclonal
Concentration	Lot specific
Conjugation	Unconjugated
Purification	Affinity purification
Dilution Range	WB:1:500-1:1000 ELISA:Recommended starting concentration is 1 Mu g/mL. Please optimize the concentration based on your specific assay requirements.
Formulation	PBS with 0.05% Proclin300, 0.05% BSA, 50% Glycerol, pH 7.3.
Isotype	IgG
Molecular Weight	Protein Mw: 18kDa Observed Mw: 50-55kDa
Storage Instruction	Store at -20°C for up to 1 year from the date of receipt, and avoid repeat freeze-thaw cycles.

TARGET INFORMATION

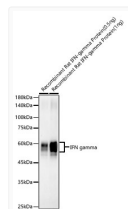
Gene ID	25712
Gene Symbol	Ifng
UniProt ID	IFNG_RAT
Immunogen Region	20-153
Immunogen Sequence	CYCQGTLIESLESLSKKNYFNS SSM DAMEGKSLLLDIWRNWQ KDGNTKILESQIISFYLRLF EVLKDNQAISNNISVIESHL ITNFFSNSKAKKDAFMSIAK FEVNNPQIQHKAVNELIRVI HQLSPESSLRKRKR
Specificity	Recombinant fusion protein containing a sequence corresponding to amino acids 20-153 of rat IFN gamma (NP_620235.1).

ADDITIONAL INFORMATION

Note STRICTLY FOR FURTHER SCIENTIFIC RESEARCH USE ONLY (RUO). MUST NOT TO BE USED IN DIAGNOSTIC OR THERAPEUTIC APPLICATIONS.



Western blot analysis of Recombinant Mouse IFN-gamma Protein, using IFN gamma antibody (STJ11105031) at 1:1000 dilution. Secondary antibody: HRP Goat Anti-Rabbit IgG (H+L) (STJS000856) at 1:10000 dilution. Lysates/proteins: 1ng/0.5ng per lane. Blocking buffer: 3% nonfat dry milk in TBST. Detection: ECL Basic Kit. Exposure time: 120s.



Western blot analysis of Recombinant Rat IFN-gamma Protein, using IFN gamma antibody (STJ11105031) at 1:1000 dilution. Secondary antibody: HRP Goat Anti-Rabbit IgG (H+L) (STJS000856) at 1:10000 dilution. Lysates/proteins: 1ng/0.5ng per lane. Blocking buffer: 3% nonfat dry milk in TBST. Detection: ECL Basic Kit. Exposure time: 120s.