

## Anti-MPXV antibody (1-275 aa) [S5015RM] (STJ11105015)

### GENERAL INFORMATION

Product Type	Primary antibodies
Applications	WB/ELISA
Host / Source	Rabbit
Reactivity	Monkeypox

### PRODUCT PROPERTIES

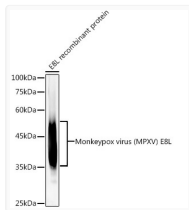
Clonality	Monoclonal
Concentration	Lot specific
Conjugation	Unconjugated
Purification	Affinity purification
Dilution Range	WB:1:2000-1:6000 ELISA:Recommended starting concentration is 1 Mu g/mL. Please optimize the concentration based on your specific assay requirements.
Formulation	PBS with 0.05% Proclin300, 0.05% BSA, 50% Glycerol, pH 7.3.
Isotype	IgG
Molecular Weight	Protein Mw: 35kDa Observed Mw: 40-50kDa
Storage Instruction	Store at -20°C for up to 1 year from the date of receipt, and avoid repeat freeze-thaw cycles.

### TARGET INFORMATION

Immunogen Region	1-275 aa
Immunogen Sequence	MPQQLSPINIETKKAISDTR LKTLDIHYNESKPTTIQNTG KLVIRINFKGGYISGGFLPNE YVLSTIHIYWGKEDDYGSNH LIDVYKYSGEINLVHWNKKK YSSYEEAKKHDDGIIIIAIF LQVSDHKNVYFQKIVNQLDS IRSANMSAPFDSVFLDNLL PSTLDYFTYLGTTINHSADA AWIIFPTPINIHSQQLSKFR TLLSSSNHEGKPHYITENYR NPYKLNDTQVYYSGEIIR
Specificity	Recombinant fusion protein containing a sequence corresponding to amino acids 1-275 of human Monkeypox virus (MPXV) E8L. (NP_536532.1).

### ADDITIONAL INFORMATION

Note	STRICTLY FOR FURTHER SCIENTIFIC RESEARCH USE ONLY (RUO). MUST NOT TO BE USED IN DIAGNOSTIC OR THERAPEUTIC APPLICATIONS.
------	---



Western blot analysis of recombinant Monkeypox virus (MPXV) E8L protein, using Monkeypox virus (MPXV) E8L antibody (STJ11105015) at 1:5000 dilution. Secondary antibody: HRP Goat Anti-Rabbit IgG (H+L) (STJS000856) at 1:10000 dilution. Lysates/proteins: 10ng per lane. Blocking buffer: 3% nonfat dry milk in TBST. Detection: ECL Basic Kit. Exposure time: 30s.