

## Anti-CACNA1S antibody (900-1000 aa) (STJ11105001)

### GENERAL INFORMATION

Product Type	Primary antibodies
Applications	IF/ICC/ELISA
Host / Source	Rabbit
Reactivity	Mouse/Rat

### PRODUCT PROPERTIES

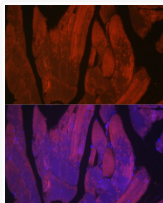
Clonality	Polyclonal
Concentration	Lot specific
Conjugation	Unconjugated
Purification	Affinity purification
Dilution Range	IF/ICC:1:50-1:200 ELISA:Recommended starting concentration is 1 µg/mL. Please optimize the concentration based on your specific assay requirements.
Formulation	PBS with 0.05% Proclin300, 50% Glycerol, pH 7.3.
Isotype	IgG
Molecular Weight	Protein Mw: 212kDa Observed Mw: Refer to figures
Storage Instruction	Store at -20°C for up to 1 year from the date of receipt, and avoid repeat freeze-thaw cycles.

### TARGET INFORMATION

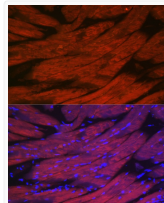
Gene ID	<a href="#">779</a>
Gene Symbol	<a href="#">CACNA1S</a>
UniProt ID	<a href="#">CAC1S_HUMAN</a>
Immunogen Region	900-1000 aa
Immunogen Sequence	RVLRPLRAINRAKGLKHVVQ CMFVAISTIGNIVLVTLLQ FMFACIGVQLFKGKFFRCTD LSKMTEEECRGYYYVYKDGD PMQIELRHREVVHSDFFHDN V
Specificity	Recombinant fusion protein containing a sequence corresponding to amino acids 900-1000 of human CACNA1S. (NP_000060.2).

### ADDITIONAL INFORMATION

Note STRICTLY FOR FURTHER SCIENTIFIC RESEARCH USE ONLY (RUO). MUST NOT TO BE USED IN DIAGNOSTIC OR THERAPEUTIC APPLICATIONS.



Immunofluorescence analysis of rat skeletal muscle cells using CACNA1S Rabbit polyclonal antibody (STJ11105001) at dilution of 1:50 (40x lens). Blue: DAPI for nuclear staining.



Immunofluorescence analysis of mouse skeletal muscle cells using CACNA1S Rabbit polyclonal antibody (STJ11105001) at dilution of 1:50 (40x lens). Blue: DAPI for nuclear staining.