

Anti-CD200 antibody (31-232 aa) (STJ11104991)

GENERAL INFORMATION

Product Type	Primary antibodies
Applications	WB/ELISA
Host / Source	Rabbit
Reactivity	Mouse/Rat

PRODUCT PROPERTIES

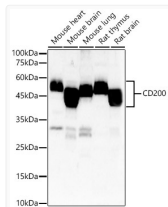
Clonality	Polyclonal
Concentration	Lot specific
Conjugation	Unconjugated
Purification	Affinity purification
Dilution Range	WB:1:500-1:1000 ELISA:Recommended starting concentration is 1 µg/mL. Please optimize the concentration based on your specific assay requirements.
Formulation	PBS with 0.05% Proclin300, 50% Glycerol, pH 7.3.
Isotype	IgG
Molecular Weight	Protein Mw: 31kDa Observed Mw: 45-50kDa
Storage Instruction	Store at -20°C for up to 1 year from the date of receipt, and avoid repeat freeze-thaw cycles.

TARGET INFORMATION

Gene Symbol	Cd200 Uniprot ID= OX2G_MOUSE
Immunogen Region	31-232 aa
Immunogen Sequence	QVEVVTQDERKALHTTASLR CSLKTSQEPLIVTWQKKKAV SPENMVTYSKTHGVVIQPAY KDRINVTGLWSSITFWN TTLEDEGCMCLFNFTFGSQK VSGTACLTLYVQPIVHLHYN YFEDHLNITCSATARPAPAI SWKGTGTGIENSTESHFHSN GTTSVTSILRVKDPKTQVGK EVICQVLYLGNVIDYKQSLD KG
Specificity	Recombinant fusion protein containing a sequence corresponding to amino acids 31-232 of mouse CD200. (NP_034948.3).

ADDITIONAL INFORMATION

Note **STRICTLY FOR FURTHER SCIENTIFIC RESEARCH USE ONLY (RUO). MUST NOT TO BE USED IN DIAGNOSTIC OR THERAPEUTIC APPLICATIONS.**



Western blot analysis of various lysates, using CD200 antibody (STJ11104991) at 1:700 dilution. Secondary antibody: HRP Goat Anti-Rabbit IgG (H+L) (STJS000856) at 1:10000 dilution. Lysates/proteins: 25 µg per lane. Blocking buffer: 3% nonfat dry milk in TBST. Detection: ECL Basic Kit. Exposure time: 180s.