

Anti-Cleaved-Gasdermin B antibody (200-300 aa) (STJ11104987)

GENERAL INFORMATION

Product Type	Primary antibodies
Applications	WB/ELISA
Host / Source	Rabbit
Reactivity	Human

PRODUCT PROPERTIES

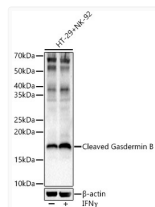
Clonality	Polyclonal
Concentration	Lot specific
Conjugation	Unconjugated
Purification	Affinity purification
Dilution Range	WB:1:100-1:500 ELISA:Recommended starting concentration is 1 µg/mL. Please optimize the concentration based on your specific assay requirements.
Formulation	PBS with 0.05% Proclin300, 50% Glycerol, pH 7.3.
Isotype	IgG
Molecular Weight	Protein Mw: 18kDa/45kDa/46kDa/47kDa Observed Mw: 16kDa
Storage Instruction	Store at -20°C for up to 1 year from the date of receipt, and avoid repeat freeze-thaw cycles.

TARGET INFORMATION

Gene ID	55876
Gene Symbol	GSDMB
UniProt ID	GSDMB_HUMAN
Immunogen Region	200-300 aa
Immunogen Sequence	PPNRVLSYRVKQLVFPNKET MNIHFRGKTKSFPEGKSLGS EDSRNMKEKLEDMESVLKDL TEEKRKDVLNSLAKCLGKED IRQDLQQRVSEVLISGELHM E
Specificity	Recombinant fusion protein containing a sequence corresponding to amino acids 200-300 of human Cleaved Gasdermin B. (NP_001159431.1).

ADDITIONAL INFORMATION

Note STRICTLY FOR FURTHER SCIENTIFIC RESEARCH USE ONLY (RUO). MUST NOT TO BE USED IN DIAGNOSTIC OR THERAPEUTIC APPLICATIONS.



Western blot analysis of lysates from HT-29+NK-92, using Cleaved Gasdermin B Rabbit polyclonal antibody (STJ11104987) at 1:400 dilution. HT-29 and NK-92 cells were treated by IFN Gamma (50ng/ml) for 8 hours. Secondary antibody: HRP Goat Anti-Rabbit IgG (H+L) (STJS000856) at 1:10000 dilution. Lysates/proteins: 25µg per lane. Blocking buffer: 3% nonfat dry milk in TBST. Detection: ECL Enhanced Kit. Exposure time: 120s.