

Anti-CTSB antibody (8-339) [S4983RM] (STJ11104983)

GENERAL INFORMATION

Product Type	Primary antibodies
Applications	WB/IF/ICC/ELISA
Host / Source	Rabbit
Reactivity	Human

PRODUCT PROPERTIES

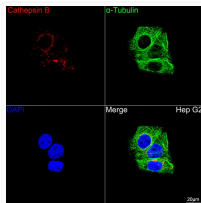
Clonality	Monoclonal
Concentration	Lot specific
Conjugation	Unconjugated
Purification	Affinity purification
Dilution Range	WB:1:100-1:500 IF/CC:1:50-1:200 ELISA:Recommended starting concentration is 1 μ g/mL. Please optimize the concentration based on your specific assay requirements.
Formulation	PBS with 0.05% Proclin300, 0.05% BSA, 50% Glycerol, pH 7.3.
Isotype	IgG
Molecular Weight	Protein Mw: 38kDa Observed Mw: 39-42kDa
Storage Instruction	Store at -20°C for up to 1 year from the date of receipt, and avoid repeat freeze-thaw cycles.

TARGET INFORMATION

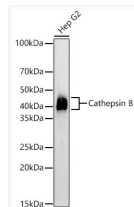
Gene ID	1508
Gene Symbol	CTSB
UniProt ID	CATB_HUMAN
Immunogen Region	8-339
Immunogen Sequence	CCLLVLANARSRPSFHPLSD ELVNYVNKRNNTWQAGHNFY NVDMSYLKRLCGTFLGGPKP PQRVMFTEDLKLPAFDARE QWPQCPTIKEIRDQSGCGSC WAFGAVEAISDRICHTNAH VSVEVSAEDLLTCCGSMCGD GCNGGYPAEAWNFWTRKGLV SGGLYESHVGCRRPYSIPPCE HHVNGSRPPCTGEGDTPKCS KICEPGYSPTYKQDKHYGYN SYSVSNSEKDIMAEIYKNG
Specificity	Recombinant fusion protein containing a sequence corresponding to amino acids 8-339 of human Cathepsin B.

ADDITIONAL INFORMATION

Note **STRICTLY FOR FURTHER SCIENTIFIC RESEARCH USE ONLY (RUO). MUST NOT TO BE USED IN DIAGNOSTIC OR THERAPEUTIC APPLICATIONS.**



Confocal imaging of Hep G2 cells using Cathepsin B Rabbit monoclonal antibody (STJ11104983, dilution 1:200) followed by a further incubation with Cy3 Goat Anti-Rabbit IgG (H+L) (dilution 1:500) (Red). The cells were counterstained with Alpha-Tubulin Mouse monoclonal antibody (dilution 1:400) followed by incubation with ABflo® 488-conjugated Goat Anti-Mouse IgG (H+L) antibody (dilution 1:500) (Green). DAPI was used for nuclear staining (Blue). Objective: 100x.



Western blot analysis of lysates from Hep G2 cells, using Cathepsin B Rabbit monoclonal antibody (STJ11104983) at 1:500 dilution. Secondary antibody: HRP Goat Anti-Rabbit IgG (H+L) (STJS000856) at 1:10000 dilution. Lysates/proteins: 25 μ g per lane. Blocking buffer: 3% nonfat dry milk in TBST. Enhanced Kit. Exposure time: 120s.