

## Anti-PDCD1 antibody (20-120) [S4976RM] (STJ11104976)

### GENERAL INFORMATION

Product Type	Primary antibodies
Applications	WB/ELISA
Host / Source	Rabbit
Reactivity	Human/Mouse/Rat

### PRODUCT PROPERTIES

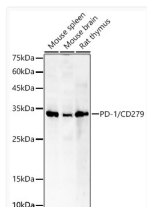
Clonality	Monoclonal
Concentration	Lot specific
Conjugation	Unconjugated
Purification	Affinity purification
Dilution Range	WB:1:500-1:1000 ELISA:Recommended starting concentration is 1 µg/mL. Please optimize the concentration based on your specific assay requirements.
Formulation	PBS with 0.05% Proclin300, 0.05% BSA, 50% Glycerol, pH 7.3.
Isotype	IgG
Molecular Weight	Protein Mw: 32kDa Observed Mw: 35kDa
Storage Instruction	Store at -20°C for up to 1 year from the date of receipt, and avoid repeat freeze-thaw cycles.

### TARGET INFORMATION

Gene ID	<a href="#">5133</a>
Gene Symbol	<a href="#">PDCD1</a>
UniProt ID	<a href="#">PDCD1_HUMAN</a>
Immunogen Region	20-120
Immunogen Sequence	RPGWFLDSPDRPWNPPTFSP ALLVVTEGDNATFTCSFSNT SESFVLNWYRMSPSNQTDKL AAFPEDRSQPGQDCRFRTVQ LPNGRDFHMSVVRARRRNDSG T
Specificity	A synthetic peptide corresponding to a sequence within amino acids 20-120 of human PD-1/CD279 (NP_005009.2).

### ADDITIONAL INFORMATION

Note STRICTLY FOR FURTHER SCIENTIFIC RESEARCH USE ONLY (RUO). MUST NOT TO BE USED IN DIAGNOSTIC OR THERAPEUTIC APPLICATIONS.



Western blot analysis of various lysates, using PD-1/CD279 Rabbit monoclonal antibody (STJ11104976) at 1:1000 dilution. Secondary antibody: HRP Goat Anti-Rabbit IgG (H+L) (STJS000856) at 1:10000 dilution. Lysates/proteins: 25 µg per lane. Blocking buffer: 3% nonfat dry milk in TBST. Detection: ECL Enhanced Kit. Exposure time: 180s.