

Anti-PI3 Kinase p85 alpha/beta/gamma mAb antibody (400-500) [S4970RM] (STJ11104970)

GENERAL INFORMATION

Product Type	Primary antibodies
Applications	WB/IF/ICC/ELISA
Host / Source	Rabbit
Reactivity	Mouse/Rat

PRODUCT PROPERTIES

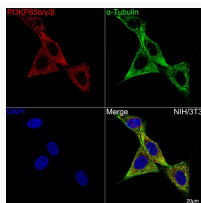
Clonality	Monoclonal
Concentration	Lot specific
Conjugation	Unconjugated
Purification	Affinity purification
Dilution Range	WB:1:4500-1:18000 IF/ICC:1:50-1:200 ELISA:Recommended starting concentration is 1 Mu g/mL. Please optimize the concentration based on your specific assay requirements.
Formulation	PBS with 0.05% Proclin300, 0.05% BSA, 50% Glycerol, pH 7.3.
Isotype	IgG
Molecular Weight	Protein Mw: 42-54kDa/81-84kDa Observed Mw: 85kDa
Storage Instruction	Store at -20°C for up to 1 year from the date of receipt, and avoid repeat freeze-thaw cycles.

TARGET INFORMATION

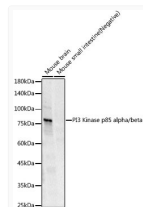
Gene ID	5295 5296 8503 PIK3R1 PIK3R2 P85A_HUMAN P85B_HUMAN P55G_HUMAN
Immunogen Region	400-500
Immunogen Sequence	SVVELINHYRNESLAQYNPK LDVKLLYPVSKYQQDQVVKE DNIEAVGKKLHEYNTQFQEK SREYDRLYEEYTRTSQEIQM KRTAIEAFNETIKIFEEQQC T
Specificity	Recombinant fusion protein containing a sequence corresponding to amino acids 400-500 of human PI3 Kinase p85 alpha/beta (NP_852664.1).

ADDITIONAL INFORMATION

Note **STRICTLY FOR FURTHER SCIENTIFIC RESEARCH USE ONLY (RUO). MUST NOT TO BE USED IN DIAGNOSTIC OR THERAPEUTIC APPLICATIONS.**



Confocal imaging of NIH/3T3 cells using PI3K P85 Alpha/P55 Gamma/P85 Beta Rabbit monoclonal antibody (STJ11104970, dilution 1:200) (Red). The cells were counterstained with Alpha-Tubulin Mouse monoclonal antibody (dilution 1:400) (Green). DAPI was used for nuclear staining (Blue). Objective: 60x.



Western blot analysis of various lysates, using PI3K P85 Alpha/P55 Gamma/P85 Beta antibody (STJ11104970) at 1:9000 dilution. Secondary antibody: HRP Goat Anti-Rabbit IgG (H+L) (STJS000856) at 1:10000 dilution. Lysates/proteins: 25 Mu g per lane. Blocking buffer: 3% nonfat dry milk in TBST. Detection: ECL Enhanced Kit. Exposure time: 60s.