

## Anti-HNRNPF antibody (315-415 aa) (STJ11104962)

### GENERAL INFORMATION

Product Type	Primary antibodies
Applications	WB/ELISA
Host / Source	Rabbit
Reactivity	Human/Mouse

### PRODUCT PROPERTIES

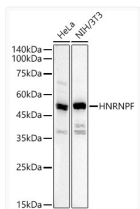
Clonality	Polyclonal
Concentration	Lot specific
Conjugation	Unconjugated
Purification	Affinity purification
Dilution Range	WB:1:500-1:2000 ELISA:Recommended starting concentration is 1 µg/mL. Please optimize the concentration based on your specific assay requirements.
Formulation	PBS with 0.02% Sodium Azide, 50% Glycerol, pH 7.3.
Isotype	IgG
Molecular Weight	Protein Mw: 46kDa Observed Mw: 46kDa
Storage Instruction	Store at -20°C for up to 1 year from the date of receipt, and avoid repeat freeze-thaw cycles.

### TARGET INFORMATION

Gene ID	<a href="#">3185</a>
Gene Symbol	<a href="#">HNRNPF</a>
UniProt ID	<a href="#">HNRPF_HUMAN</a>
Immunogen Region	315-415 aa
Immunogen Sequence	VRVHIEIGPDGRVTGEADVE FATHEEAVAAMSKDRANMQH RYIELFLNSTTGASNGAYSS QVMQGMGVSAQAATYSGLS QSVSGCYGAGYSGQNSMGGY D
Specificity	Recombinant fusion protein containing a sequence corresponding to amino acids 315-415 of human HNRNPF. (NP_004957.1).

### ADDITIONAL INFORMATION

Note STRICTLY FOR FURTHER SCIENTIFIC RESEARCH USE ONLY (RUO). MUST NOT TO BE USED IN DIAGNOSTIC OR THERAPEUTIC APPLICATIONS.



Western blot analysis of various lysates, using HNRNPF Rabbit polyclonal antibody (STJ11104962) at 1:500 dilution. Secondary antibody: HRP Goat Anti-Rabbit IgG (H+L) (STJS000856) at 1:10000 dilution. Lysates/proteins: 25µg per lane. Blocking buffer: 3% nonfat dry milk in TBST. Detection: ECL Basic Kit. Exposure time: 30s.