

Anti-INTS13 antibody (200-300 aa) [S4957RM] (STJ11104957)

GENERAL INFORMATION

Product Type	Primary antibodies
Applications	WB/ELISA
Host / Source	Rabbit
Reactivity	Human

PRODUCT PROPERTIES

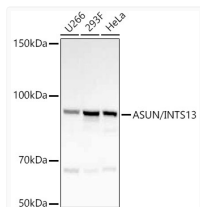
Clonality	Monoclonal
Concentration	Lot specific
Conjugation	Unconjugated
Purification	Affinity purification
Dilution Range	WB:1:10000-1:80000 ELISA:Recommended starting concentration is 1 Mu g/mL. Please optimize the concentration based on your specific assay requirements.
Formulation	PBS with 0.05% Proclin300, 0.05% BSA, 50% Glycerol, pH 7.3.
Isotype	IgG
Molecular Weight	Protein Mw: 80kDa Observed Mw: 80kDa
Storage Instruction	Store at -20°C for up to 1 year from the date of receipt, and avoid repeat freeze-thaw cycles.

TARGET INFORMATION

Gene ID	55726
Gene Symbol	INTS13
UniProt ID	INT13_HUMAN
Immunogen Region	200-300 aa
Immunogen Sequence	QKCELVLIHTYPVGEDSLVS DRSKKELSPVLTSEVHSVRA GRHLATKLNILVQQHFDLAS TTITNIPMKEEQHANTSANY DVELLHHKDAHVDFLKSGDS H
Specificity	Recombinant fusion protein containing a sequence corresponding to amino acids 200-300 of human ASUN/INTS13. (NP_060634.2).

ADDITIONAL INFORMATION

Note STRICTLY FOR FURTHER SCIENTIFIC RESEARCH USE ONLY (RUO). MUST NOT TO BE USED IN DIAGNOSTIC OR THERAPEUTIC APPLICATIONS.



Western blot analysis of various lysates, using ASUN/INTS13 antibody (STJ11104957) at 1:70000 dilution. Secondary antibody: HRP Goat Anti-Rabbit IgG (H+L) (STJS000856) at 1:10000 dilution. Lysates/proteins: 25 Mu g per lane. Blocking buffer: 3% nonfat dry milk in TBST. Detection: ECL Basic Kit. Exposure time: 60s.