

## Anti-PSPH antibody (1-225 aa) [S4949RM] (STJ11104949)

### GENERAL INFORMATION

Product Type	Primary antibodies
Applications	WB/ELISA
Host / Source	Rabbit
Reactivity	Human/Mouse/Rat

### PRODUCT PROPERTIES

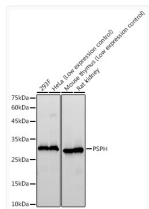
Clonality	Monoclonal
Concentration	Lot specific
Conjugation	Unconjugated
Purification	Affinity purification
Dilution Range	WB:1:2000-1:10000 ELISA:Recommended starting concentration is 1 µg/mL. Please optimize the concentration based on your specific assay requirements.
Formulation	PBS with 0.05% Proclin300, 0.05% BSA, 50% Glycerol, pH 7.3.
Isotype	IgG
Molecular Weight	Protein Mw: 25kDa Observed Mw: 28kDa
Storage Instruction	Store at -20°C for up to 1 year from the date of receipt, and avoid repeat freeze-thaw cycles.

### TARGET INFORMATION

Gene ID	<a href="#">5723</a>
Gene Symbol	<a href="#">PSPH</a>
UniProt ID	<a href="#">SERB_HUMAN</a>
Immunogen Region	1-225 aa
Immunogen Sequence	MVSHSELRLKLFYSADAVCFD VDSTVIREEGIDELAKICGV EDAVSEMTRRAMGGAVPFKA ALTERLALIQPSREQVQRLL AEQPPHLTPGIRELVSRLQE RNVQVFLISGGFRSIVEHVA SKLNIPATNVFANRLKIFYFN GEYAGFDETQPTAESGGKGV VIKLLKEKFHFKKIIMIGDG ATDMEACPPADAFIGFGGNV IRQQVKDNAKWIYITDFVELL GELEE
Specificity	Recombinant fusion protein containing a sequence corresponding to amino acids 1-225 of human PSPH. (NP_004568.2).

### ADDITIONAL INFORMATION

Note **STRICTLY FOR FURTHER SCIENTIFIC RESEARCH USE ONLY (RUO). MUST NOT TO BE USED IN DIAGNOSTIC OR THERAPEUTIC APPLICATIONS.**



Western blot analysis of various lysates, using PSPH antibody (STJ11104949) at 1:10000 dilution. Secondary antibody: HRP Goat Anti-Rabbit IgG (H+L) (STJS000856) at 1:10000 dilution. Lysates/proteins: 25 µg per lane. Blocking buffer: 3% nonfat dry milk in TBST. Detection: ECL Basic Kit. Exposure time: 90s.