

Anti-LRRK2 antibody (100-340 aa) [S4946RM] (STJ11104946)

GENERAL INFORMATION

Product Type	Primary antibodies
Applications	WB/ELISA
Host / Source	Rabbit
Reactivity	Human

PRODUCT PROPERTIES

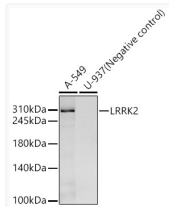
Clonality	Monoclonal
Concentration	Lot specific
Conjugation	Unconjugated
Purification	Affinity purification
Dilution Range	WB:1:100-1:500 ELISA:Recommended starting concentration is 1 µg/mL. Please optimize the concentration based on your specific assay requirements.
Formulation	PBS with 0.05% Proclin300, 0.05% BSA, 50% Glycerol, pH 7.3.
Isotype	IgG
Molecular Weight	Protein Mw: 286kDa Observed Mw: 290kDa
Storage Instruction	Store at -20°C for up to 1 year from the date of receipt, and avoid repeat freeze-thaw cycles.

TARGET INFORMATION

Gene ID	120892
Gene Symbol	LRRK2
UniProt ID	LRRK2_HUMAN
Immunogen Region	100-340 aa
Immunogen Sequence	MGPQDVGNDWEVLGVHQLIL KMLTVHNASVNLSVIGLKTL DLLLTSGKITLLILDEESDI FMLIFDAMHSFPANDEVQKL GCKALHVLFEVSEEQLTEF VENKDYMILLSALTNFKDEE EIVLHVLHCLHSLAIPCNNV EVLMSGNVRCYNIVVEAMKA FPMSERIQEVSCCLLHRLTL GNFFNILVLNEVHEFVVKAV QYPENAALQISALSCLALL TETIFLNQDLEEKENQEN
Specificity	Recombinant fusion protein containing a sequence corresponding to amino acids 100-340 of human LRRK2. (NP_940980.4).

ADDITIONAL INFORMATION

Note **STRICTLY FOR FURTHER SCIENTIFIC RESEARCH USE ONLY (RUO). MUST NOT TO BE USED IN DIAGNOSTIC OR THERAPEUTIC APPLICATIONS.**



Western blot analysis of various lysates, using LRRK2 Rabbit monoclonal antibody (STJ11104946) at 1:500 dilution. Secondary antibody: HRP Goat Anti-Rabbit IgG (H+L) (STJS000856) at 1:10000 dilution. Lysates/proteins: 25 µg per lane. Blocking buffer: 3% nonfat dry milk in TBST. Detection: ECL Enhanced Kit. Exposure time: 180s.