

Anti-Recombinant-PDE10A antibody (439-779 aa) [S4945RM] (STJ11104945)

GENERAL INFORMATION

Product Type	Primary antibodies
Applications	WB/ELISA
Host / Source	Rabbit
Reactivity	Mouse/Rat

PRODUCT PROPERTIES

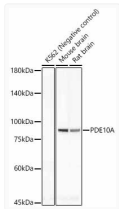
Clonality	Monoclonal
Concentration	Lot specific
Conjugation	Unconjugated
Purification	Affinity purification
Dilution Range	WB:1:500-1:1000 ELISA:Recommended starting concentration is 1 µg/mL. Please optimize the concentration based on your specific assay requirements.
Formulation	PBS with 0.05% Proclin300, 0.05% BSA, 50% Glycerol, pH 7.3.
Isotype	IgG
Molecular Weight	Protein Mw: 88kDa Observed Mw: 88kDa
Storage Instruction	Store at -20°C for up to 1 year from the date of receipt, and avoid repeat freeze-thaw cycles.

TARGET INFORMATION

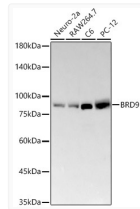
Gene ID	10846
Gene Symbol	PDE10A
UniProt ID	PDE10_HUMAN
Immunogen Region	439-779 aa
Immunogen Sequence	SICTSEEWQGLMQFTLPVRL CKEIELFHFHDIGPFENMWPG IFVYVMVHRSCGTSCFELEKL CRFIMSVKKNYRRVPHYHNWK HAVTVAHCMYAILQNNHTLF TDLERKGLLIAACLCHDLDR GFSNSYLQKFDHPLAALYST STMELHFSQTVSILQLEGH NIFSTLSSEYEQVLEIRK AIIATDLALYFGNRKQLEEM YQTGSLNLNQSHRDRVIGL MMTACDCLSVTKLWPVTKL
Specificity	Recombinant fusion protein containing a sequence corresponding to amino acids 439-779 of human PDE10A. (NP_006652.1).

ADDITIONAL INFORMATION

Note **STRICTLY FOR FURTHER SCIENTIFIC RESEARCH USE ONLY (RUO). MUST NOT TO BE USED IN DIAGNOSTIC OR THERAPEUTIC APPLICATIONS.**



Western blot analysis of various lysates, using PDE10A antibody (STJ11104945) at 1:1000 dilution. Secondary antibody: HRP Goat Anti-Rabbit IgG (H+L) (STJS000856) at 1:10000 dilution. Lysates/proteins: 25 µg per lane. Blocking buffer: 3% nonfat dry milk in TBST. Detection: ECL Basic Kit. Exposure time: 180s.



Western blot analysis of various lysates, using BRD9 antibody at 1:2000 dilution. Secondary antibody: HRP Goat Anti-Rabbit IgG (H+L) (STJS000856) at 1:10000 dilution. Lysates/proteins: 25 µg per lane. Blocking buffer: 3% nonfat dry milk in TBST. Detection: ECL Basic Kit. Exposure time: 180s.