

Anti-SMAD5 antibody (186-260) [S4940RM] (STJ11104940)

GENERAL INFORMATION

Product Type	Primary antibodies
Applications	WB/ELISA
Host / Source	Rabbit
Reactivity	Human/Rat

PRODUCT PROPERTIES

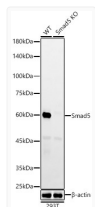
Clonality	Monoclonal
Concentration	Lot specific
Conjugation	Unconjugated
Purification	Affinity purification
Dilution Range	WB:1:500-1:1000 ELISA:Recommended starting concentration is 1 µg/mL. Please optimize the concentration based on your specific assay requirements.
Formulation	PBS with 0.05% Proclin300, 0.05% BSA, 50% Glycerol, pH 7.3.
Isotype	IgG
Molecular Weight	Protein Mw: 52kDa Observed Mw: 60kDa
Storage Instruction	Store at -20°C for up to 1 year from the date of receipt, and avoid repeat freeze-thaw cycles.

TARGET INFORMATION

Gene ID	4090
Gene Symbol	SMAD5
UniProt ID	SMAD5_HUMAN
Immunogen Region	186-260
Immunogen Sequence	PLSPNSPYPPSPASSTYPNS PASSGPGSPFQLPADTPPPA YMPDDQMGQDNSQPMDTSN NMIPQIMPSISSRDV
Specificity	Recombinant fusion protein containing a sequence corresponding to amino acids 186-260 of human Smad5 (NP_005894.3).

ADDITIONAL INFORMATION

Note STRICTLY FOR FURTHER SCIENTIFIC RESEARCH USE ONLY (RUO). MUST NOT TO BE USED IN DIAGNOSTIC OR THERAPEUTIC APPLICATIONS.



Western blot analysis of lysates from wild type (WT) and Smad5 knockout (KO) 293T (KO) cells, using [KO Validated] Smad5 Rabbit monoclonal antibody (STJ11104940) at 1:1000 dilution. Secondary antibody: HRP Goat Anti-Rabbit IgG (H+L) (STJS000856) at 1:10000 dilution. Lysates/proteins: 25 µg per lane. Blocking buffer: 3% nonfat dry milk in TBST. Detection: ECL Enhanced Kit. Exposure time: 180s.