

Anti-IFN-beta antibody (1-182) [S4936RM] (STJ11104936)

GENERAL INFORMATION

Product Type	Primary antibodies
Applications	WB/ELISA
Host / Source	Rabbit
Reactivity	Mouse

PRODUCT PROPERTIES

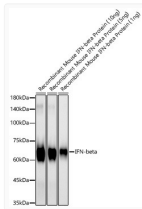
Clonality	Monoclonal
Concentration	Lot specific
Conjugation	Unconjugated
Purification	Affinity purification
Dilution Range	WB:1:2000-1:7000 ELISA:Recommended starting concentration is 1 μ g/mL. Please optimize the concentration based on your specific assay requirements.
Formulation	PBS with 0.05% Proclin300, 0.05% BSA, 50% Glycerol, pH 7.3.
Isotype	IgG
Molecular Weight	Protein Mw: 22kDa Observed Mw: 63kDa (C-hFc&His tagged Active Recombinant Mouse IFN-beta Protein) , 24kDa/26kDa (Endogenous)
Storage Instruction	Store at -20°C for up to 1 year from the date of receipt, and avoid repeat freeze-thaw cycles.

TARGET INFORMATION

Gene ID	15977
Gene Symbol	ifnb1
UniProt ID	IFNB_MOUSE
Immunogen Region	1-182
Immunogen Sequence	MNNRWILHAAFLLCFSTTAL SINYKQLQLQERTNIRKQCE LLEQLNGKINLTYRADFKIP MEMTEKMQKSYTAFAIQEML QNVFLVFRNFSSTGWNETI VVRLLEDLHQQTVFLKTVLE EKQEERLTWEMSSTALHLKS YYWRVQRYLKLKMKYNSYAWM VVRAEIFRNFLIIRRLTRNF QN
Specificity	Recombinant fusion protein containing a sequence corresponding to amino acids 1-182 of mouse IFN-beta (NP_034640.1)

ADDITIONAL INFORMATION

Note STRICTLY FOR FURTHER SCIENTIFIC RESEARCH USE ONLY (RUO). MUST NOT TO BE USED IN DIAGNOSTIC OR THERAPEUTIC APPLICATIONS.



Western blot analysis of recombinant Mouse IFN-beta Protein using IFN-beta Rabbit monoclonal antibody (STJ11104936) at 1:6000 dilution. Secondary antibody: HRP Goat Anti-Rabbit IgG (H+L) (STJS00856) at 1:10000 dilution. Lysates/proteins: 10ng/5ng/1ng per lane. Blocking buffer: 3% nonfat dry milk in TBST. Detection: ECL Basic Kit. Exposure time: 30s.