

Anti-FCER1A antibody (26-205 aa) [S4932RM] (STJ11104932)

GENERAL INFORMATION

Product Type	Primary antibodies
Applications	WB/ELISA
Host / Source	Rabbit
Reactivity	Human/Mouse/Rat

PRODUCT PROPERTIES

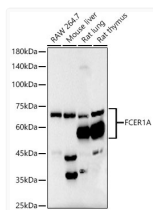
Clonality	Monoclonal
Concentration	Lot specific
Conjugation	Unconjugated
Purification	Affinity purification
Dilution Range	WB:1:1000-1:7000 ELISA:Recommended starting concentration is 1 µg/mL. Please optimize the concentration based on your specific assay requirements.
Formulation	PBS with 0.05% Proclin300, 0.05% BSA, 50% Glycerol, pH 7.3.
Isotype	IgG
Molecular Weight	Protein Mw: 30kDa Observed Mw: 45-70kDa
Storage Instruction	Store at -20°C for up to 1 year from the date of receipt, and avoid repeat freeze-thaw cycles.

TARGET INFORMATION

Gene ID	2205
Gene Symbol	FCER1A
UniProt ID	FCERA_HUMAN
Immunogen Region	26-205 aa
Immunogen Sequence	VPQKPKVSLNPPWNRIFKGE NVTLTCNGNFFEVSSTKWF HNGSLSEETNSSLNIVNAKF EDSGEYKQCQHQQVNESEPVY LEVFSDWLLQASAEVVM EG QPLFLRCHGWRNWDVYKVIY YKDG EALKWYENHNISITN ATVEDSGTYCYCTGKVVQLDY ESEPLNITVIKAPREKYWLQ
Specificity	Recombinant fusion protein containing a sequence corresponding to amino acids 26-205 of human FceR1 alpha. (NP_001992.1).

ADDITIONAL INFORMATION

Note STRICTLY FOR FURTHER SCIENTIFIC RESEARCH USE ONLY (RUO). MUST NOT TO BE USED IN DIAGNOSTIC OR THERAPEUTIC APPLICATIONS.



Western blot analysis of various lysates, using FceR1 alpha antibody (STJ11104932) at 1:6000 dilution. Secondary antibody: HRP Goat Anti-Rabbit IgG (H+L) (STJS000856) at 1:10000 dilution. Lysates/proteins: 25 µg per lane. Blocking buffer: 3% nonfat dry milk in TBST. Detection: ECL Basic Kit. Exposure time: 90s.