

Anti-CD40 antibody (21-193 aa) [S4929RM] (STJ11104929)

GENERAL INFORMATION

Product Type	Primary antibodies
Applications	WB/ELISA
Host / Source	Rabbit
Reactivity	Human

PRODUCT PROPERTIES

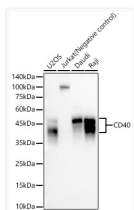
Clonality	Monoclonal
Concentration	Lot specific
Conjugation	Unconjugated
Purification	Affinity purification
Dilution Range	WB:1:500-1:1000 ELISA:Recommended starting concentration is 1 Mu g/mL. Please optimize the concentration based on your specific assay requirements.
Formulation	PBS with 0.09% Sodium Azide, 0.05% BSA, 50% Glycerol, pH 7.3.
Isotype	IgG
Molecular Weight	Protein Mw: 31kDa Observed Mw: 40-45kDa
Storage Instruction	Store at -20°C for up to 1 year from the date of receipt, and avoid repeat freeze-thaw cycles.

TARGET INFORMATION

Gene ID	958
Gene Symbol	CD40
UniProt ID	TNRS_HUMAN
Immunogen Region	21-193 aa
Immunogen Sequence	EPPTACREKQYLINSQCCSL CQPGQKLVSDCTEFTETECL PCGESEFLDTWNRETHCHQH KYCDPNLGLRVQKGTSETD TICTCEEGWHCTSEACESCV LHRSCSPGFGVKIATGVSD TICEPCVGGFFSNVSSAFEK CHPWTSCETKDLVVQQAGTN KTDVVCGPQDRLR
Specificity	Recombinant fusion protein containing a sequence corresponding to amino acids 21-193 of human CD40. (NP_001241.1).

ADDITIONAL INFORMATION

Note STRICTLY FOR FURTHER SCIENTIFIC RESEARCH USE ONLY (RUO). MUST NOT TO BE USED IN DIAGNOSTIC OR THERAPEUTIC APPLICATIONS.



Western blot analysis of various lysates, using CD40 antibody (STJ11104929) at 1:1000 dilution. Secondary antibody: HRP Goat Anti-Rabbit IgG (H+L) (STJS000856) at 1:10000 dilution. Lysates/proteins: 25 Mu g per lane. Blocking buffer: 3% nonfat dry milk in TBST. Detection: ECL Basic Kit. Exposure time: 60s.