

Anti-ATAD3A/ATAD3B antibody (1-240) (STJ11104924)

GENERAL INFORMATION

Product Type	Primary antibodies
Applications	WB/IF/ICC/ELISA
Host / Source	Rabbit
Reactivity	Human/Mouse/Rat

PRODUCT PROPERTIES

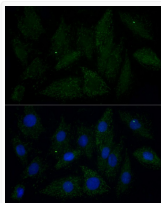
Clonality	Polyclonal
Concentration	Lot specific
Conjugation	Unconjugated
Purification	Affinity purification
Dilution Range	WB:1:500-1:1000 IF/CC:1:50-1:200 ELISA:Recommended starting concentration is 1 μ g/mL. Please optimize the concentration based on your specific assay requirements.
Formulation	PBS with 0.02% Sodium Azide, 50% Glycerol, pH 7.3.
Isotype	IgG
Molecular Weight	Protein Mw: 71/73kDa Observed Mw: 68kDa
Storage Instruction	Store at -20°C for up to 1 year from the date of receipt, and avoid repeat freeze-thaw cycles.

TARGET INFORMATION

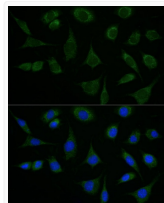
Gene ID	55210 83858
Gene Symbol	ATAD3A ATAD3B
UniProt ID	ATD3A_HUMAN ATD3B_HUMAN
Immunogen Region	1-240
Immunogen Sequence	MSWLFGVNGKPGKGEAGAGPPP PLPPAQPGAEGGGDRGLGDR PAKDKWSNFDPTGLERAAK AARELEHSRYAKEALNLAQM QEQTLQLEQQSKLKEYEAAV EQLKSEQIRAQAEERRKTL EETRQHQARAQYQDKLARQR YEDQLKQQQLLNEENLRKQE ESVQKQEAAMRRATVEREMEL RHKNEMLRVETEARARAKAE RENADIIREQIRLKASEHRQ TVLESIRTAGTLFGEGFRA
Specificity	Recombinant fusion protein containing a sequence corresponding to amino acids 1-240 of human ATAD3B (NP_114127.3).

ADDITIONAL INFORMATION

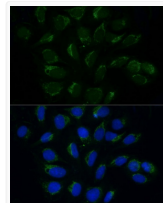
Note STRICTLY FOR FURTHER SCIENTIFIC RESEARCH USE ONLY (RUO). MUST NOT TO BE USED IN DIAGNOSTIC OR THERAPEUTIC APPLICATIONS.



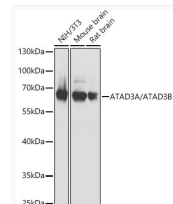
Immunofluorescence analysis of H9C2 cells using ATAD3A/ATAD3B antibody (STJ11104924) at dilution of 1:100 (40x lens). Blue: DAPI for nuclear staining.



Immunofluorescence analysis of L929 cells using ATAD3A/ATAD3B antibody (STJ11104924) at dilution of 1:100 (40x lens). Blue: DAPI for nuclear staining.



Immunofluorescence analysis of U2OS cells using ATAD3A/ATAD3B antibody (STJ11104924) at dilution of 1:100 (40x lens). Blue: DAPI for nuclear staining.



Western blot analysis of extracts of various lysates, using ATAD3A/ATAD3B antibody (STJ11104924) at 1:1000 dilution. Secondary antibody: HRP Goat Anti-Rabbit IgG (H+L) (STJS000856) at 1:10000 dilution. Lysates/proteins: 25 μ g per lane. Blocking buffer: 3% nonfat dry milk in TBST. Detection: ECL Basic Kit. Exposure time: 1s.