

Anti-POU4F1 antibody (1-100 aa) (STJ11104894)

GENERAL INFORMATION

Product Type	Primary antibodies
Applications	WB/IF/ICC/ELISA
Host / Source	Rabbit
Reactivity	Human/Mouse/Rat

PRODUCT PROPERTIES

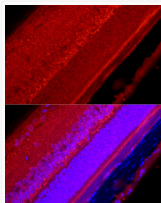
Clonality	Polyclonal
Concentration	Lot specific
Conjugation	Unconjugated
Purification	Affinity purification
Dilution Range	WB:1:500-1:1000 IF/CC:1:50-1:200 ELISA:Recommended starting concentration is 1 µg/mL. Please optimize the concentration based on your specific assay requirements.
Formulation	PBS with 0.05% Proclin300, 50% Glycerol, pH 7.3.
Isotype	IgG
Molecular Weight	Protein Mw: 43kDa Observed Mw: 55kDa
Storage Instruction	Store at -20°C for up to 1 year from the date of receipt, and avoid repeat freeze-thaw cycles.

TARGET INFORMATION

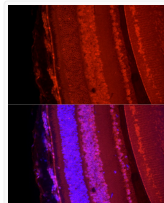
Gene ID	5457
Gene Symbol	POU4F1
UniProt ID	PO4F1_HUMAN
Immunogen Region	1-100 aa
Immunogen Sequence	MMSMNSKQPHFAMHPTLPEH KYPSLHSSSEAIRRACLPTP PLQSNLFASLDETLARAEA LAAVDIAVSQGKSHPFKPDATYHTMNSVPCTSTSTVPLAH
Specificity	A synthetic peptide corresponding to a sequence within amino acids 1-100 of human POU4F1 (NP_006228.3).

ADDITIONAL INFORMATION

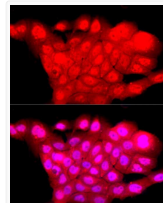
Note STRICTLY FOR FURTHER SCIENTIFIC RESEARCH USE ONLY (RUO). MUST NOT TO BE USED IN DIAGNOSTIC OR THERAPEUTIC APPLICATIONS.



Immunofluorescence analysis of rat eye cells using POU4F1Rabbit polyclonal antibody (STJ11104894) at dilution of 1:50 (40x lens). Blue: DAPI for nuclear staining.



Immunofluorescence analysis of mouse eye cells using POU4F1Rabbit polyclonal antibody (STJ11104894) at dilution of 1:50 (40x lens). Blue: DAPI for nuclear staining.



Immunofluorescence analysis of A-431 cells using POU4F1Rabbit polyclonal antibody (STJ11104894) at dilution of 1:50 (40x lens). Blue: DAPI for nuclear staining.