

## Anti-GPC3 antibody (480-580 aa) [S4890RM] (STJ11104890)

### GENERAL INFORMATION

Product Type	Primary antibodies
Applications	WB/ELISA
Host / Source	Rabbit
Reactivity	Human

### PRODUCT PROPERTIES

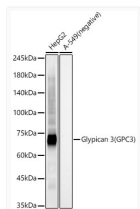
Clonality	Monoclonal
Concentration	Lot specific
Conjugation	Unconjugated
Purification	Affinity purification
Dilution Range	WB:1:2000-1:20000 ELISA:Recommended starting concentration is 1 µg/mL. Please optimize the concentration based on your specific assay requirements.
Formulation	PBS with 0.05% Proclin300, 0.05% BSA, 50% Glycerol, pH 7.3.
Isotype	IgG
Molecular Weight	Protein Mw: 66kDa Observed Mw: Refer to figures
Storage Instruction	Store at -20°C for up to 1 year from the date of receipt, and avoid repeat freeze-thaw cycles.

### TARGET INFORMATION

Gene ID	<a href="#">2719</a>
Gene Symbol	<a href="#">GPC3</a>
UniProt ID	<a href="#">GPC3_HUMAN</a>
Immunogen Region	480-580 aa
Immunogen Sequence	KGRVLDKNLDEEGFESGDCG DDEDECIGGSGDGMIVKVNQ LRFLAELAYDLVDVDDAPGNS QQATPKDNEISTFHNLGNVH SPLKLLTSMASVVCFFFLV H
Specificity	A synthetic peptide corresponding to a sequence within amino acids 480-580 of human Glypican 3 (GPC3). (NP_004475.1).

### ADDITIONAL INFORMATION

Note STRICTLY FOR FURTHER SCIENTIFIC RESEARCH USE ONLY (RUO). MUST NOT TO BE USED IN DIAGNOSTIC OR THERAPEUTIC APPLICATIONS.



Western blot analysis of various lysates, using Glypican 3 (GPC3) antibody (STJ11104890) at 1:20000 dilution. Secondary antibody: HRP Goat Anti-Rabbit IgG (H+L) (STJS000856) at 1:10000 dilution. Lysates/proteins: 25 µg per lane. Blocking buffer: 3% nonfat dry milk in TBST. Detection: ECL Basic Kit. Exposure time: 30s.