

## Anti-ELAPOR1 antibody (30-130 aa) (STJ11104875)

### GENERAL INFORMATION

Product Type	Primary antibodies
Applications	WB/ELISA
Host / Source	Rabbit
Reactivity	Human/Mouse/Rat

### PRODUCT PROPERTIES

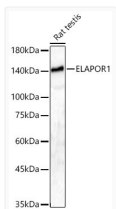
Clonality	Polyclonal
Concentration	Lot specific
Conjugation	Unconjugated
Purification	Affinity purification
Dilution Range	WB:1:500-1:1000 ELISA:Recommended starting concentration is 1 Mu g/mL. Please optimize the concentration based on your specific assay requirements.
Formulation	PBS with 0.05% Proclin300, 50% Glycerol, pH 7.3.
Isotype	IgG
Molecular Weight	Protein Mw: 111kDa Observed Mw: 140kDa/
Storage Instruction	Store at -20°C for up to 1 year from the date of receipt, and avoid repeat freeze-thaw cycles.

### TARGET INFORMATION

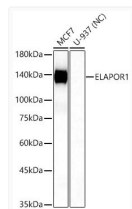
Gene ID	<a href="#">57535</a>
Gene Symbol	<a href="#">ELAPOR1</a>
UniProt ID	<a href="#">ELAP1_HUMAN</a>
Immunogen Region	30-130 aa
Immunogen Sequence	LWAGTAFQVTQGTGPELHAC KESEYHYEYTACDSTGSRWR VAVPHTPLGLCTSLPDPVKGT ECSFSCNAGEFLDMKDQSK PCAEGRYSLGTGIRFDEWDE L
Specificity	Recombinant fusion protein containing a sequence corresponding to amino acids 30-130 of human ELAPOR1. (NP_065826.2).

### ADDITIONAL INFORMATION

Note **STRICTLY FOR FURTHER SCIENTIFIC RESEARCH USE ONLY (RUO). MUST NOT TO BE USED IN DIAGNOSTIC OR THERAPEUTIC APPLICATIONS.**



Western blot analysis of lysates from Rat testis using ELAPOR1 Rabbit polyclonal antibody (STJ11104875) at 1:600 dilution. Secondary antibody:HRP Goat Anti-Rabbit IgG (H+L) (STJS000856) at 1:10000 dilution. Lysates/proteins: 25 Mu g per lane. Blocking buffer: 3% nonfat dry milk in TBST. Detection:ECL Basic Kit. Exposuretime:90s.



Western blot analysis of various lysates using ELAPOR1 Rabbit polyclonal antibody (STJ11104875) at 1:600 dilution. Secondary antibody:HRP Goat Anti-Rabbit IgG (H+L) (STJS000856) at 1:10000 dilution. Lysates/proteins: 25 Mu g per lane. Blocking buffer: 3% nonfat dry milk in TBST. Detection:ECL Basic Kit. Negative control (NC) : U-937. Exposuretime: 30s.