

## Anti-UMOD antibody (175-324) (STJ11104866)

### GENERAL INFORMATION

Product Type	Primary antibodies
Applications	WB/IF/ICC/ELISA
Host / Source	Rabbit
Reactivity	Human/Mouse/Rat

### PRODUCT PROPERTIES

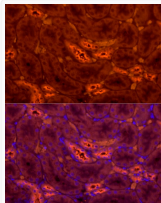
Clonality	Polyclonal
Concentration	Lot specific
Conjugation	Unconjugated
Purification	Affinity purification
Dilution Range	WB:1:100-1:500 IF/CC:1:50-1:200 ELISA:Recommended starting concentration is 1 µg/mL. Please optimize the concentration based on your specific assay requirements.
Formulation	PBS with 0.05% Proclin300, 50% Glycerol, pH 7.3.
Isotype	IgG
Molecular Weight	Protein Mw: 70kDa Observed Mw: 105-120kDa
Storage Instruction	Store at -20°C for up to 1 year from the date of receipt, and avoid repeat freeze-thaw cycles.

### TARGET INFORMATION

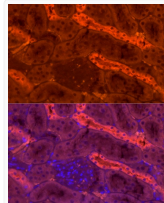
Gene ID	<a href="#">7369</a>
Gene Symbol	<a href="#">UMOD</a>
UniProt ID	<a href="#">UROM_HUMAN</a>
Immunogen Region	175-324
Immunogen Sequence	LRGWYRFVGGQGARMAETCV PVLRCNTAAPMWLNGTHPSS DEGIVSRKACAHWSGHCLLW DASVQVKACAGGYVYNLTA PPECHLAYCTDPSSVEGTCE ECSIDEDCKSNNGRWHCQCK QDFNITDISLLEHRLECGAN DMKVS LGKCC
Specificity	Recombinant fusion protein containing a sequence corresponding to amino acids 175-324 of human Tamm Horsfall Glycoprotein. (NP_003352.2).

### ADDITIONAL INFORMATION

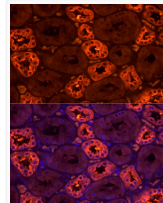
Note **STRICTLY FOR FURTHER SCIENTIFIC RESEARCH USE ONLY (RUO). MUST NOT TO BE USED IN DIAGNOSTIC OR THERAPEUTIC APPLICATIONS.**



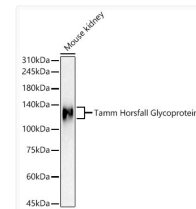
Immunofluorescence analysis of Rat Kidney using Tamm Horsfall Glycoprotein Rabbit polyclonal antibody (STJ11104866) at dilution of 1:20 (40x lens). Blue: DAPI for nuclear staining.



Immunofluorescence analysis of Mouse kidney using Tamm Horsfall Glycoprotein Rabbit polyclonal antibody (STJ11104866) at dilution of 1:20 (40x lens). Blue: DAPI for nuclear staining.



Immunofluorescence analysis of Human kidney using Tamm Horsfall Glycoprotein Rabbit polyclonal antibody (STJ11104866) at dilution of 1:20 (40x lens). Blue: DAPI for nuclear staining.



Western blot analysis of Mouse kidney, using Tamm Horsfall Glycoprotein antibody (STJ11104866) at 1:400 dilution. Secondary antibody: HRP Goat Anti-Rabbit IgG (H+L) (STJS000856) at 1:10000 dilution. Lysates/proteins: 25 µg per lane. Blocking buffer: 3% nonfat dry milk in TBST. Detection: ECL Basic Kit. Exposure time: 60s.