

Anti-IL1R1 antibody (21-332) (STJ11104863)

GENERAL INFORMATION

Product Type	Primary antibodies
Applications	WB/ELISA
Host / Source	Rabbit
Reactivity	Human/Mouse/Rat

PRODUCT PROPERTIES

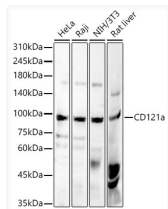
Clonality	Polyclonal
Concentration	Lot specific
Conjugation	Unconjugated
Purification	Affinity purification
Dilution Range	WB:1:500-1:1000 ELISA:Recommended starting concentration is 1 Mu g/mL. Please optimize the concentration based on your specific assay requirements.
Formulation	PBS with 0.05% Proclin300, 50% Glycerol, pH 7.3.
Isotype	IgG
Molecular Weight	Protein Mw: 65kDa Observed Mw: 90kDa
Storage Instruction	Store at-20°C for up to 1 year from the date of receipt, and avoid repeat freeze-thaw cycles.

TARGET INFORMATION

Gene ID	3554
Gene Symbol	IL1R1
UniProt ID	IL1R1_HUMAN
Immunogen Region	21-332
Immunogen Sequence	DKCKEREEKIILVSSANEID VRPCPLNPNEHKGITWYKD DSKTPVSTEQASRIHQHKEK LWFVPAKVEDSGHYCVVRN SSSYCLRIKISAKFVENEPNL CYNQAIFKQKLPVAGDGGL VCPYMEFFKNENNELPKLQW YKDCKPLLLDNIHFSGVKDR LIVMNVAEKHRGNYTCHASY TYLGKQYPITRVIEFITLEE NKPTRPVIVSPANETMEVDL GSQQLICNVTGQLSDIAY
Specificity	Recombinant fusion protein containing a sequence corresponding to amino acids 21-332 of human CD121a. (NP_000868.1?).

ADDITIONAL INFORMATION

Note **STRICTLY FOR FURTHER SCIENTIFIC RESEARCH USE ONLY (RUO). MUST NOT TO BE USED IN DIAGNOSTIC OR THERAPEUTIC APPLICATIONS.**



Western blot analysis of various lysates, using CD121a antibody (STJ11104863) at 1:600 dilution. Secondary antibody: HRP Goat Anti-Rabbit IgG (H+L) (STJS000856) at 1:10000 dilution. Lysates/proteins: 25 Mu g per lane. Blocking buffer: 3% nonfat dry milk in TBST. Detection: ECL Basic Kit. Exposure time: 90s.