

Anti-TRAF4 antibody (209-470) [S4852RM] (STJ11104852)

GENERAL INFORMATION

Product Type	Primary antibodies
Applications	WB/ELISA
Host / Source	Rabbit
Reactivity	Human/Mouse/Rat

PRODUCT PROPERTIES

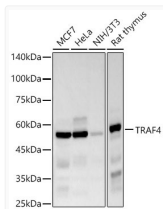
Clonality	Monoclonal
Concentration	Lot specific
Conjugation	Unconjugated
Purification	Affinity purification
Dilution Range	WB:1:1000-1:5000 ELISA:Recommended starting concentration is 1 µg/mL. Please optimize the concentration based on your specific assay requirements.
Formulation	PBS with 0.09% Sodium Azide, 0.05% BSA, 50% Glycerol, pH7.3.
Isotype	IgG
Molecular Weight	Protein Mw: 54kDa Observed Mw: 54kDa
Storage Instruction	Store at -20°C for up to 1 year from the date of receipt, and avoid repeat freeze-thaw cycles.

TARGET INFORMATION

Gene ID	9618
Gene Symbol	TRAF4
UniProt ID	TRAF4_HUMAN
Immunogen Region	209-470
Immunogen Sequence	SHQYQCPRLPVACPNQCGVG TVAREDLPGHLKDSCNTALV LCPFKDSGCKHRCPKLAMAR HVEESVKPHLAMMCALVSRQ RQELQELRRELEELSVGSDG VLIWKIGSYGRRRLQEAKAKP NLECFSPAFYTHKYGYKLQV SAFLNNGSGEGTHLSLYIR VLPGAFDNLLEWPFARRVTF SLLDQSDPGLAKPQHVTETF HPDPNWNKFNQKPGTWRGSLD ESSLGFGYPKFISHQDIRK
Specificity	Recombinant fusion protein containing a sequence corresponding to amino acids 209-470 of human TRAF4 (NP_004286.2).

ADDITIONAL INFORMATION

Note **STRICTLY FOR FURTHER SCIENTIFIC RESEARCH USE ONLY (RUO). MUST NOT TO BE USED IN DIAGNOSTIC OR THERAPEUTIC APPLICATIONS.**



Western blot analysis of various lysates, using TRAF4 antibody (STJ11104852) at 1:2000 dilution. Secondary antibody: HRP Goat Anti-Rabbit IgG (H+L) (STJS000856) at 1:10000 dilution. Lysates/proteins: 25 µg per lane. Blocking buffer: 3% nonfat dry milk in TBST. Detection: ECL Basic Kit. Exposure time: 180s.